

22-25 AUGUST 2024

THE STANDS, WANKHEDE STADIUM
(FORMER BUNGLOW 8)
MUMBAI

A watercolor illustration in shades of yellow, orange, and grey. It depicts a group of women in an art studio. One woman in the center is painting a large green canvas on an easel. To her left, another woman stands with her arms crossed. To her right, two women are seated, looking at the artwork. In the foreground on the right, a woman is seated, looking towards the group. The style is soft and painterly.

WHAT SHE MEANS

INTERPRETATIONS BY WOMEN ARTISTS

Established in 2018 by FSCA Art Advisory, our mission is to forge connections between budding artists and newfound collectors via innovative online exhibitions and dynamic pop-up events. Our driving force is to cultivate a tapestry of creativity and meaningful associations between the next generation of collectors and emerging artists from the subcontinent. Our foremost dedication is to the aspirations and requisites of the artists who define our identity. Their creations serve as mirrors reflecting the ever-evolving global landscape. Concurrently, we are dedicated to engaging with a globally inquisitive community that resonates with our shared vision of enhancing the art world. Through every endeavor, the essence of the 'next generation' remains central to our ethos, underscoring our approach in all facets of operation.



Detail of " Porcelain 3" by Rewati Shahani

In her essay , "Why I Write," Joan Didion encapsulates the essence of expression and observation, stating, "I write entirely to find out what I'm thinking, what I'm looking at, what I see and what it means." This introspective journey resonates profoundly with the works of the women artists featured in "What She Means," an exhibition that delves into the depths of female identity, perception, and articulation.

"What She Means," serves as both a question and a statement. It challenges us to consider the significance of women's voices in art and culture. As you walk through the gallery, you will encounter a myriad of themes: identity, memory, resilience, and transformation. These themes and materials are not just personal but are interwoven with broader social and cultural narratives.

Didion once wrote, "We tell ourselves stories in order to live." The artists in this exhibition tell their stories through their art, creating narratives that resonate with our own experiences. "What She Means" is a celebration of these stories, an acknowledgment of the rich tapestry of female creativity and expression. It is a reminder that art, like writing, is a way of making sense of the world and of finding meaning in the chaos.

As you immerse yourself in the exhibition, consider the question: What does she mean? Allow the art to speak to you, to challenge you, and to inspire you. Through the lens of these remarkable women artists, we gain a deeper understanding of the world and our place within it.

CONTENTS

- Arpita Akhanda
- Jayati Bose
- Vijaya Chauhan
- Gayatri Halder
- Dhara Mehrotra
- Puja Mondal
- Nandita Mukund
- Khanjan Maru Soni
- Hansika Sharma
- Kopal Seth
- Rewati Shahani



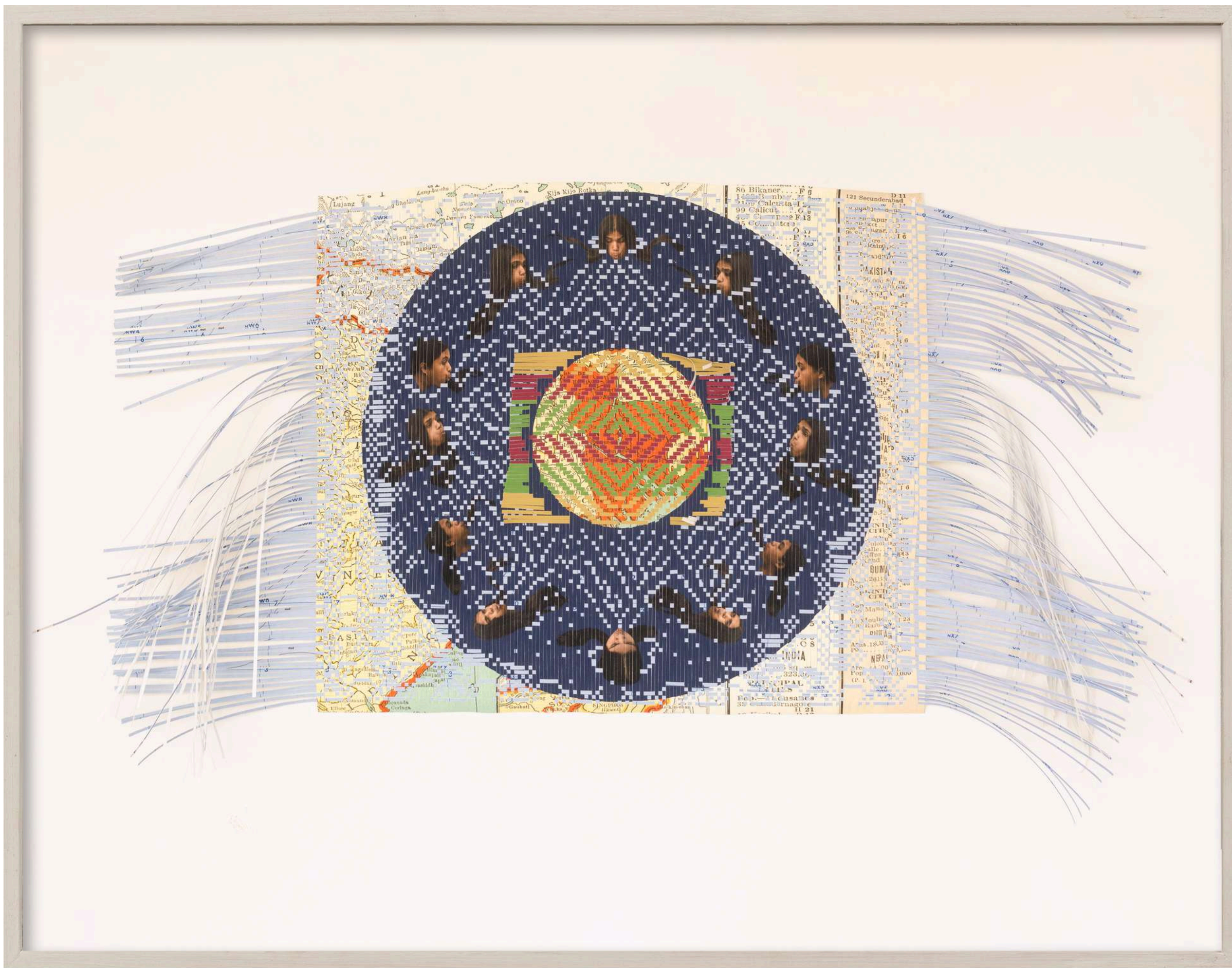
Detail of "Listening to Grasshoppers V" by Puja Mondal



ARPITA AKHANDA

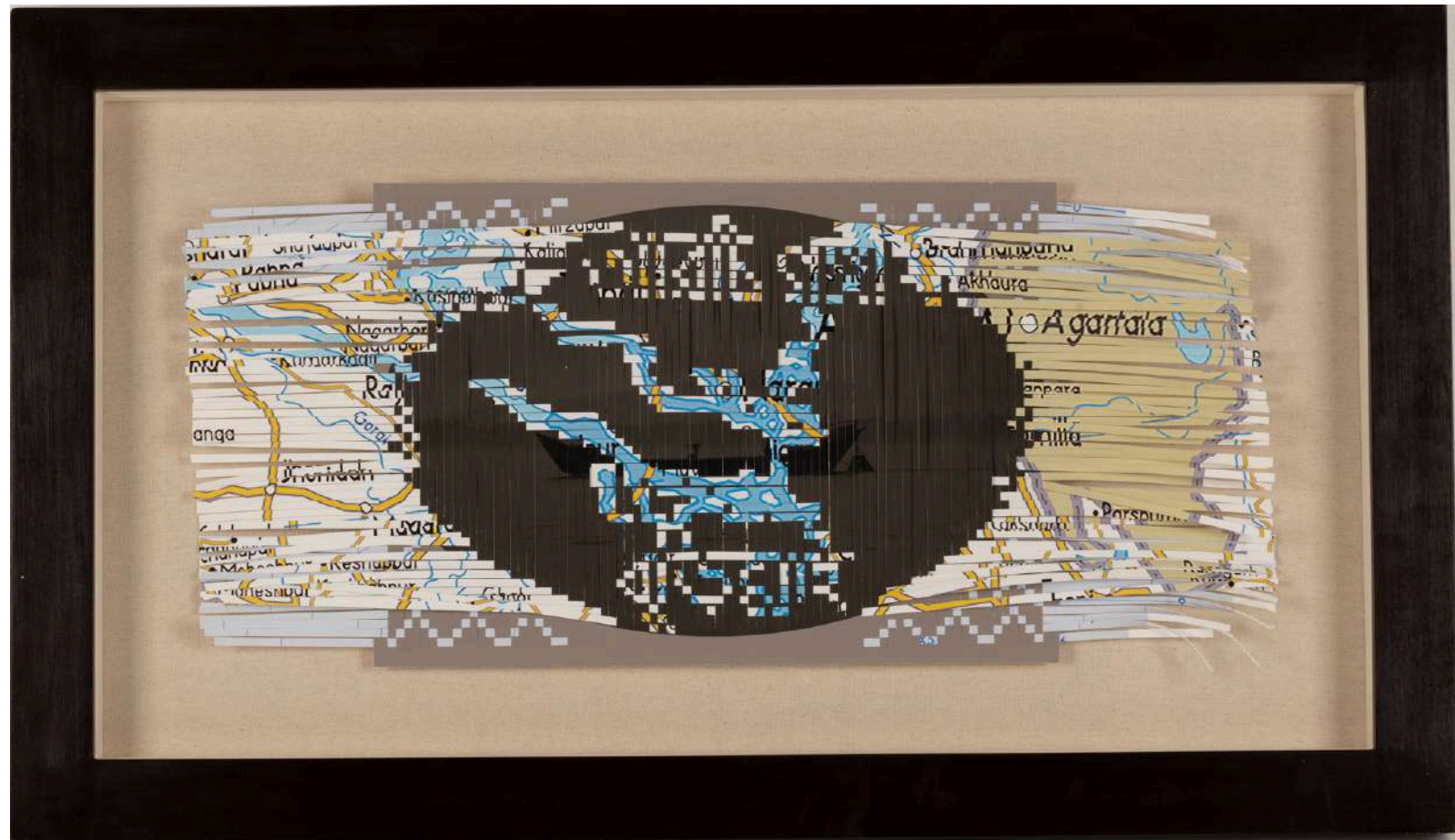
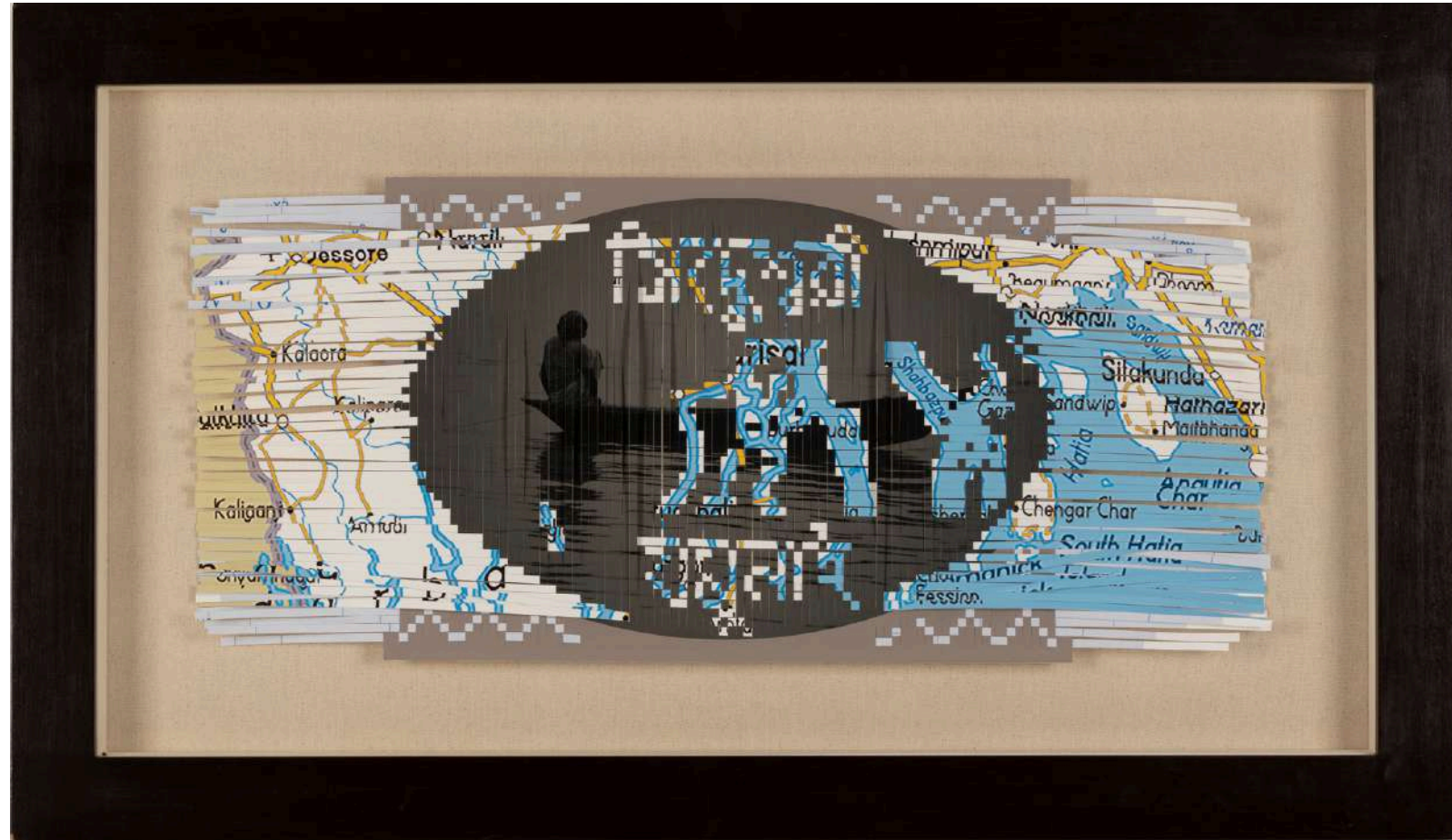
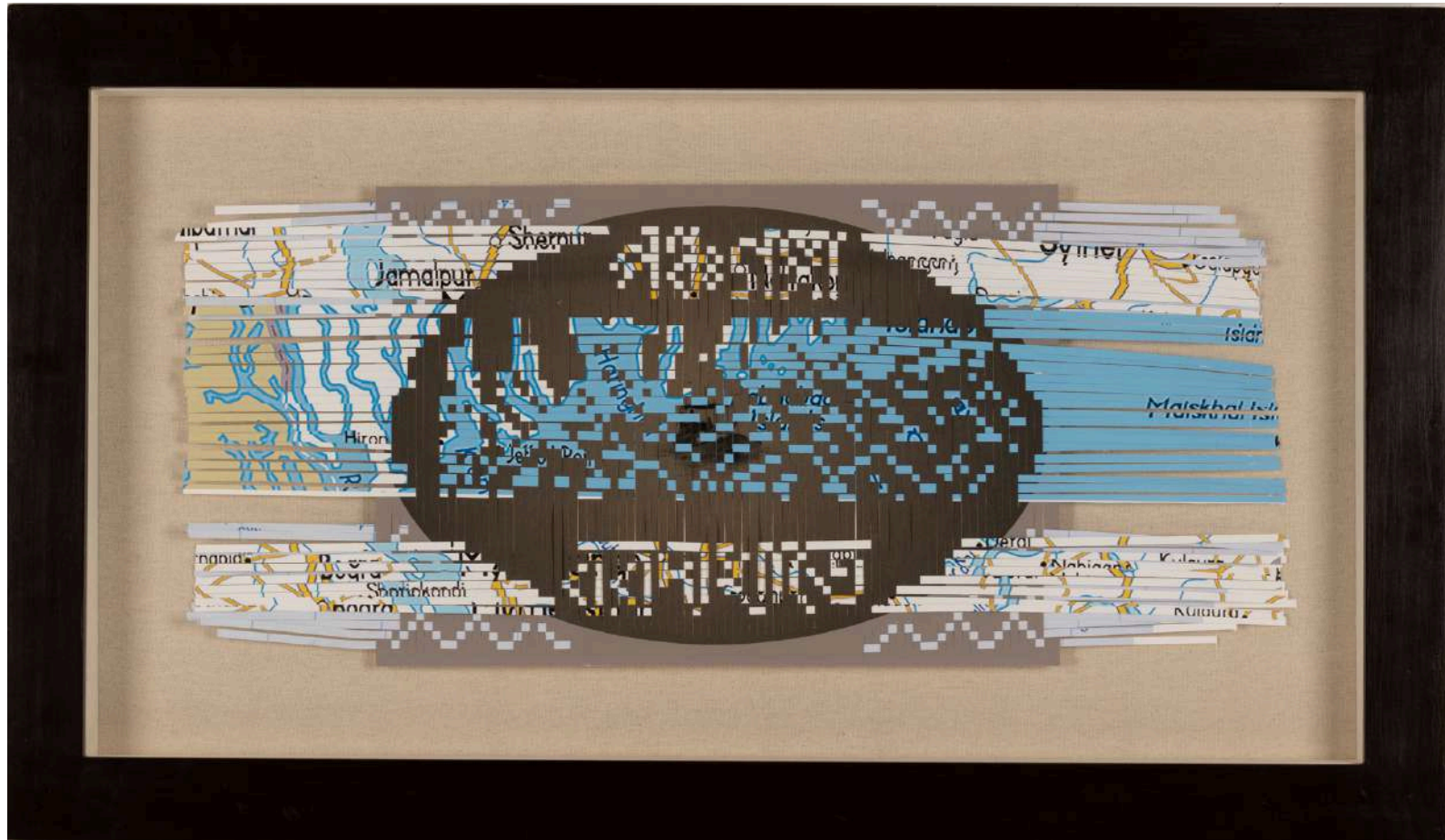
Arpita Akhanda, born into a family displaced during the Partition, explores the interplay between past trauma and present identity through performance, paper weaving, and mixed media. Her work, which includes photo performance, installations, and archival research, delves into personal and institutional histories to understand and decolonize memory.

Based in Hampi as part of the Hampi Arts Lab's residency, Akhanda's practice weaves together fragmented narratives to address themes of movement, settlement, and the politics of identity. Her projects aim to reconstruct and give voice to lost and forgotten stories through a dynamic visual language.



Detail shot

Wind Heads
Paper weaving
28.7 X 69.5 in



An ode to the rivers
Paper Weaving
26.5 X 12 in
(Suite of 4 works)

The background features a faded watercolor illustration of three women in white sarees. They are depicted in profile, facing right, and appear to be playing cards. The style is soft and ethereal, with muted colors and delicate strokes. The women are holding cards in their hands, and the overall composition is balanced and serene.

JAYATI BOSE

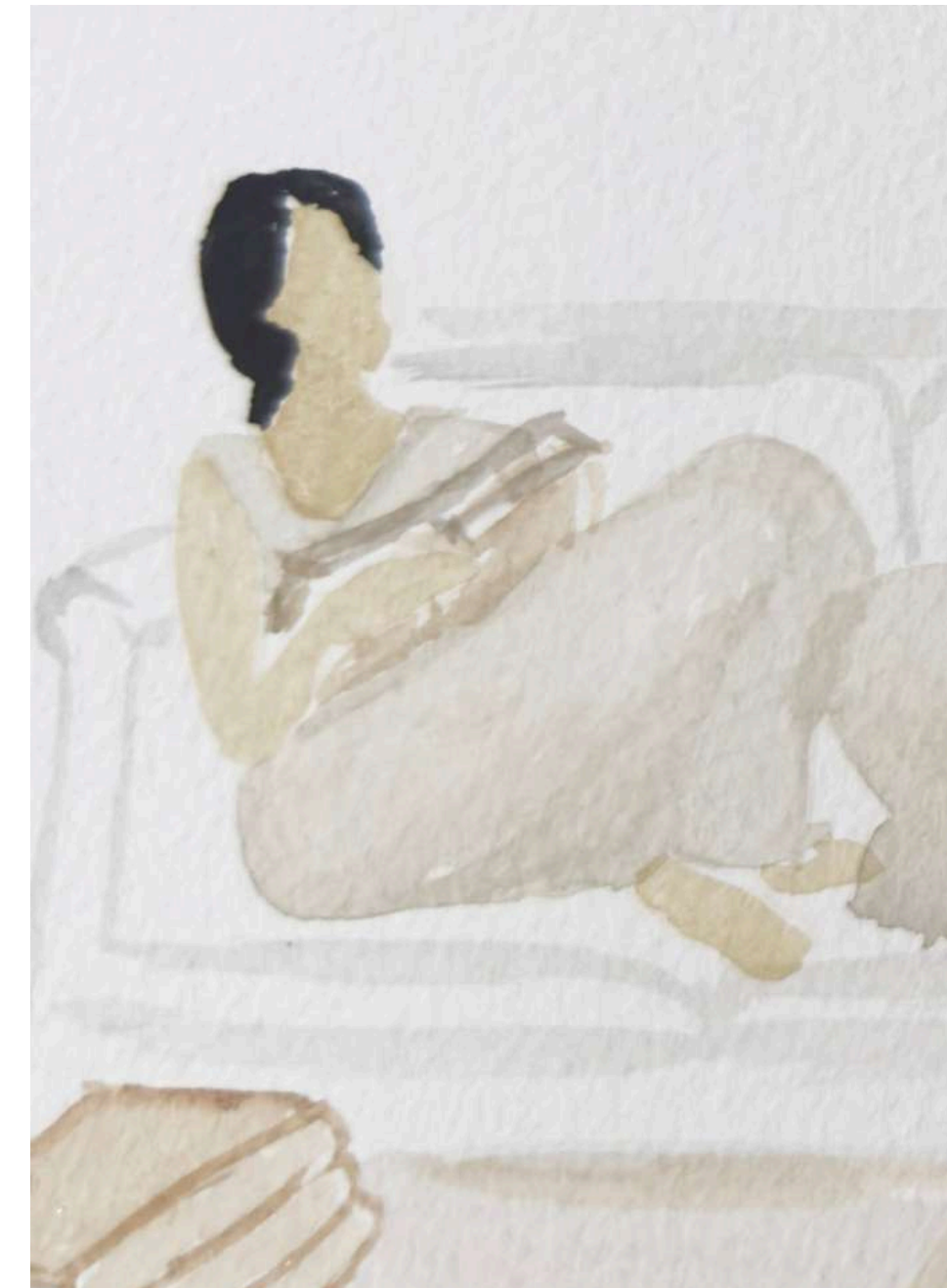
Jayati Bose, a self-taught contemporary artist of Bengali origin, has gained recognition for her distinctive watercolor paintings focusing on women. Her work, characterized by a muted color palette, captures nostalgia, Bengali culture, leisure, and beauty, presenting femininity with a sense of timelessness and tranquility.

"Women at Leisure," an ongoing exploration of her art essay that showcases her heroines draped in white sarees, enjoying moments of respite. Her watercolors are renowned for their fluidity and softness, with delicate strokes and a restrained color palette that add depth and subtlety to her compositions. Embracing Bengal's artistic and literary heritage, Bose's work pays homage to its unique charm and allure, allowing her heroines to embody grace and elegance through her ethereal and nostalgic creation.



Detail shot

Women at leisure
Watercolor on coldpress 100% cellulose
watercolor paper 300GSM
8.3 X 11.7 in



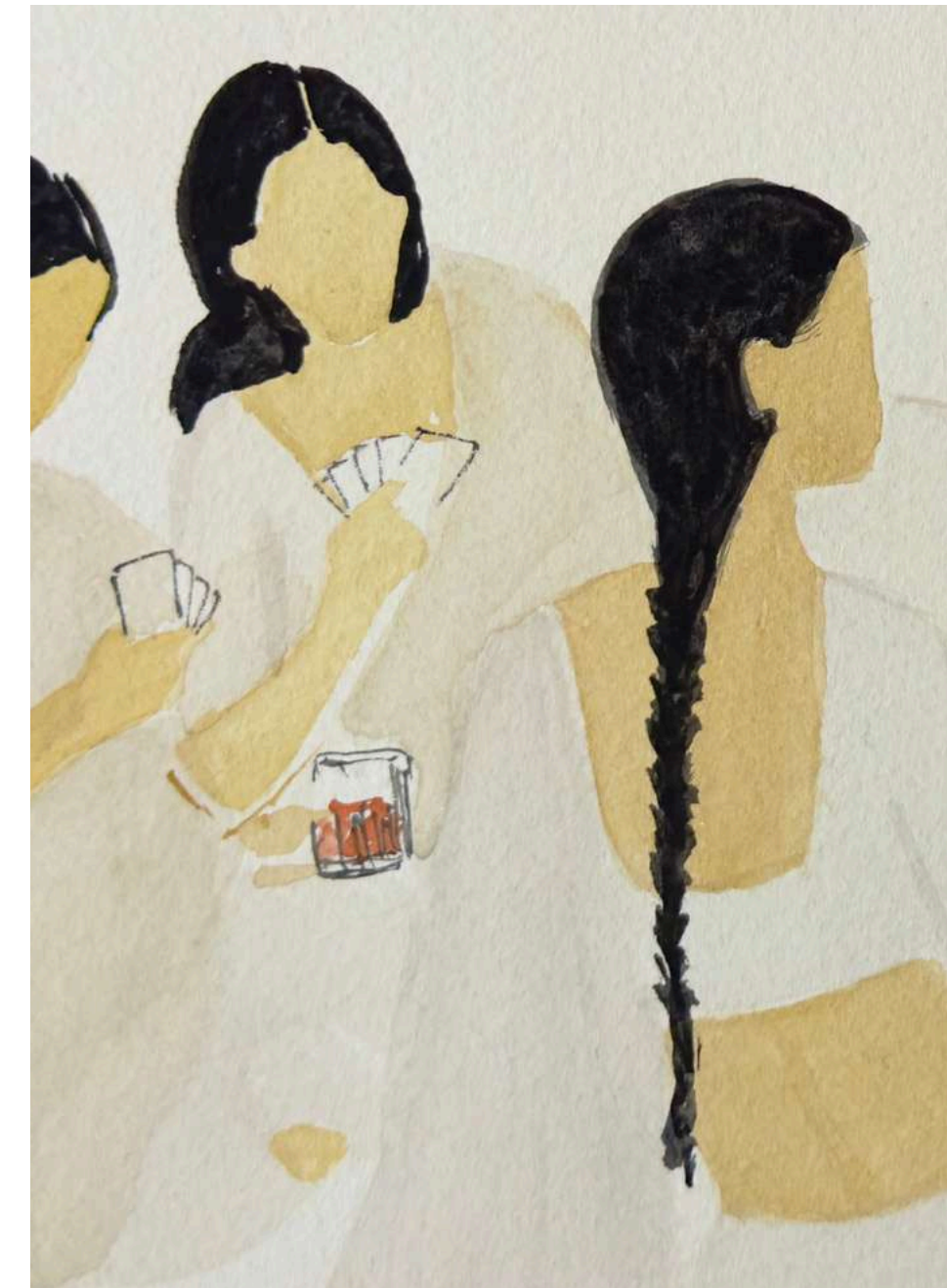
Detail shot

Women at leisure
Watercolor on coldpress 100% cellulose
watercolor paper 300GSM
8.3 X 11.7 in



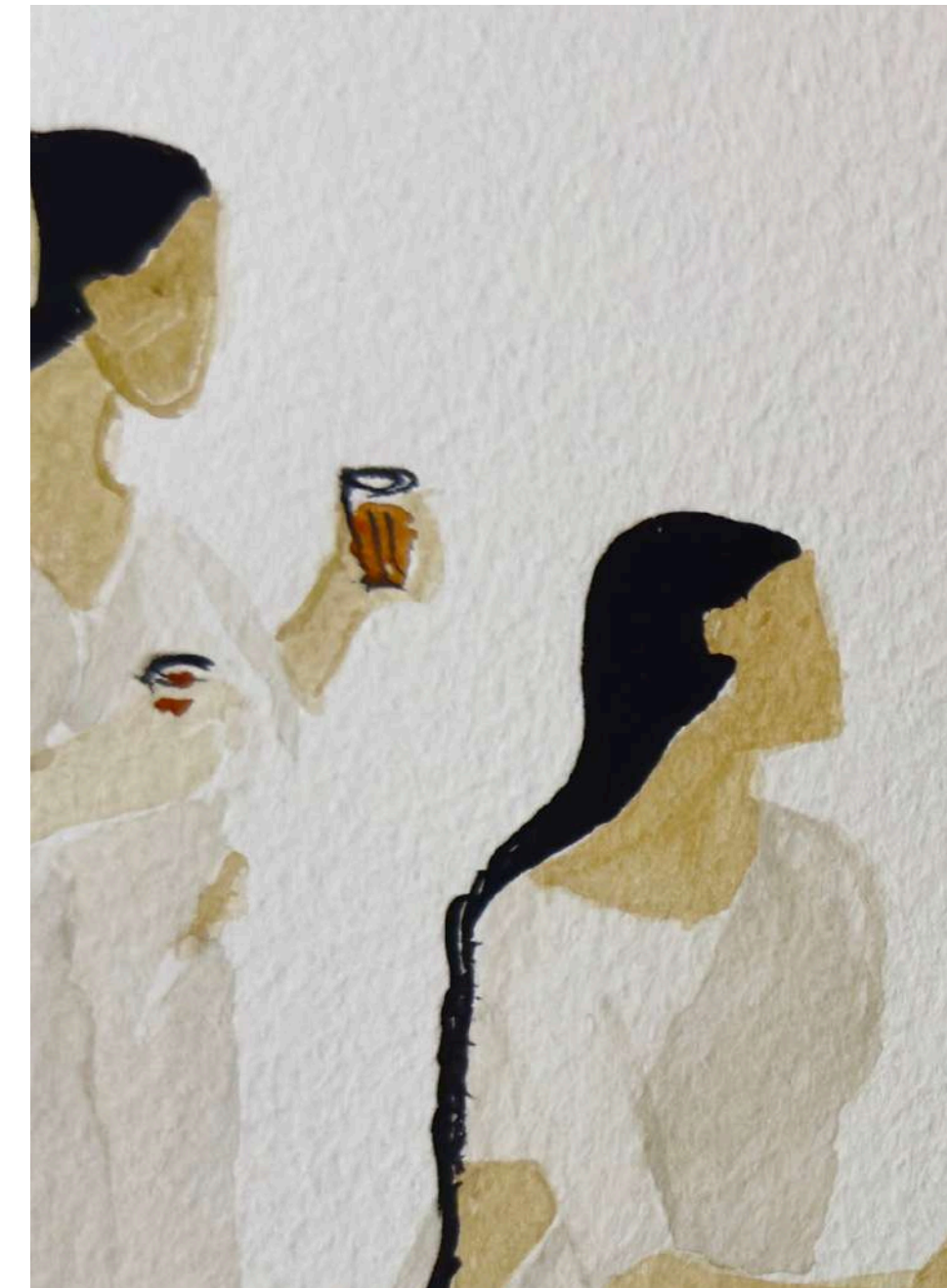
Detail shot

Women at leisure
Watercolor on coldpress 100% cellulose
watercolor paper 300GSM
8.3 X 11.7 in



Detail shot

Women at leisure
Watercolor on coldpress 100% cellulose
watercolor paper 300GSM
8.3 X 11.7 in



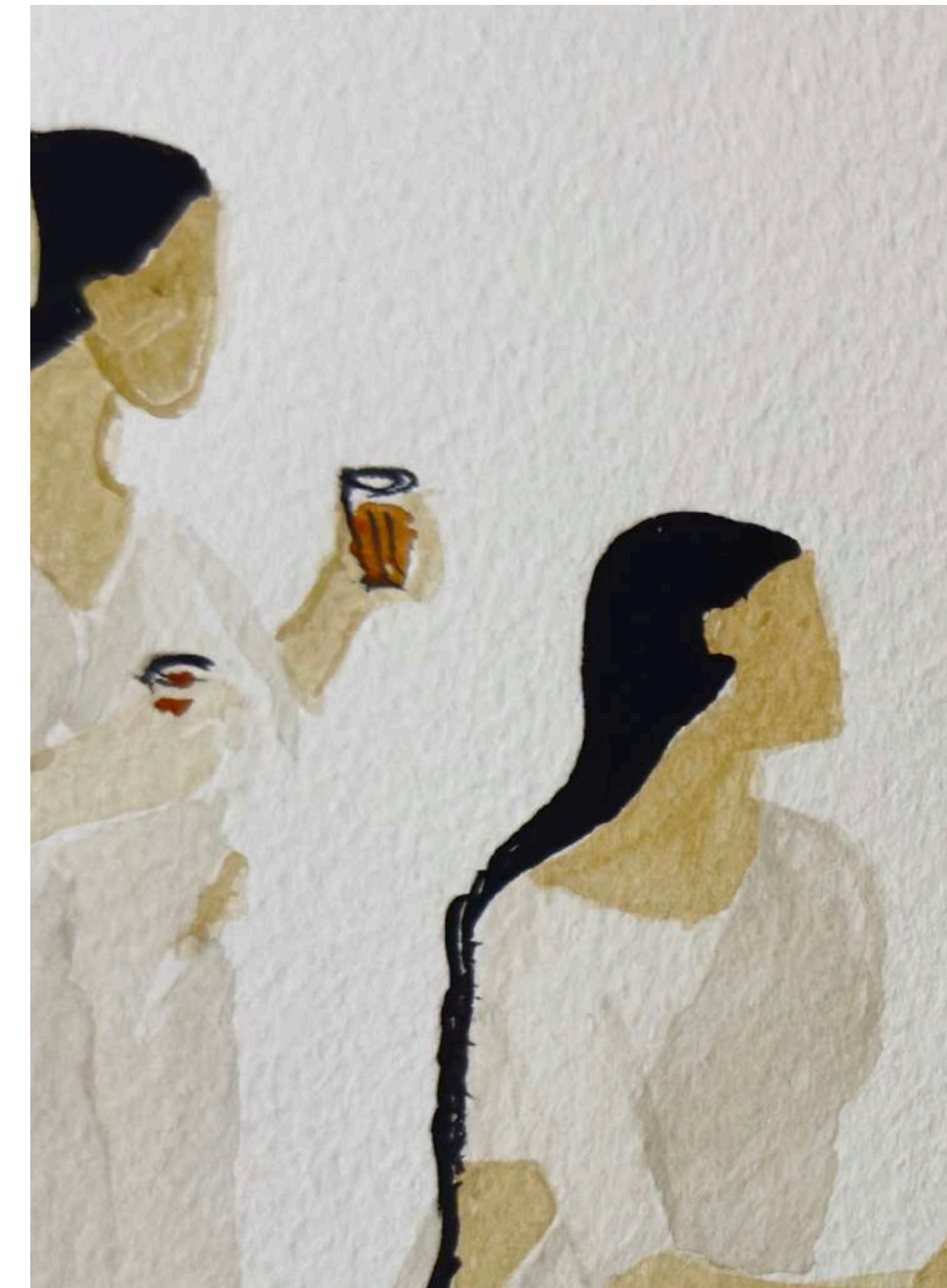
Detail shot

Women at leisure
Watercolor on coldpress 100% cellulose
watercolor paper 300GSM
8.3 X 11.7 in



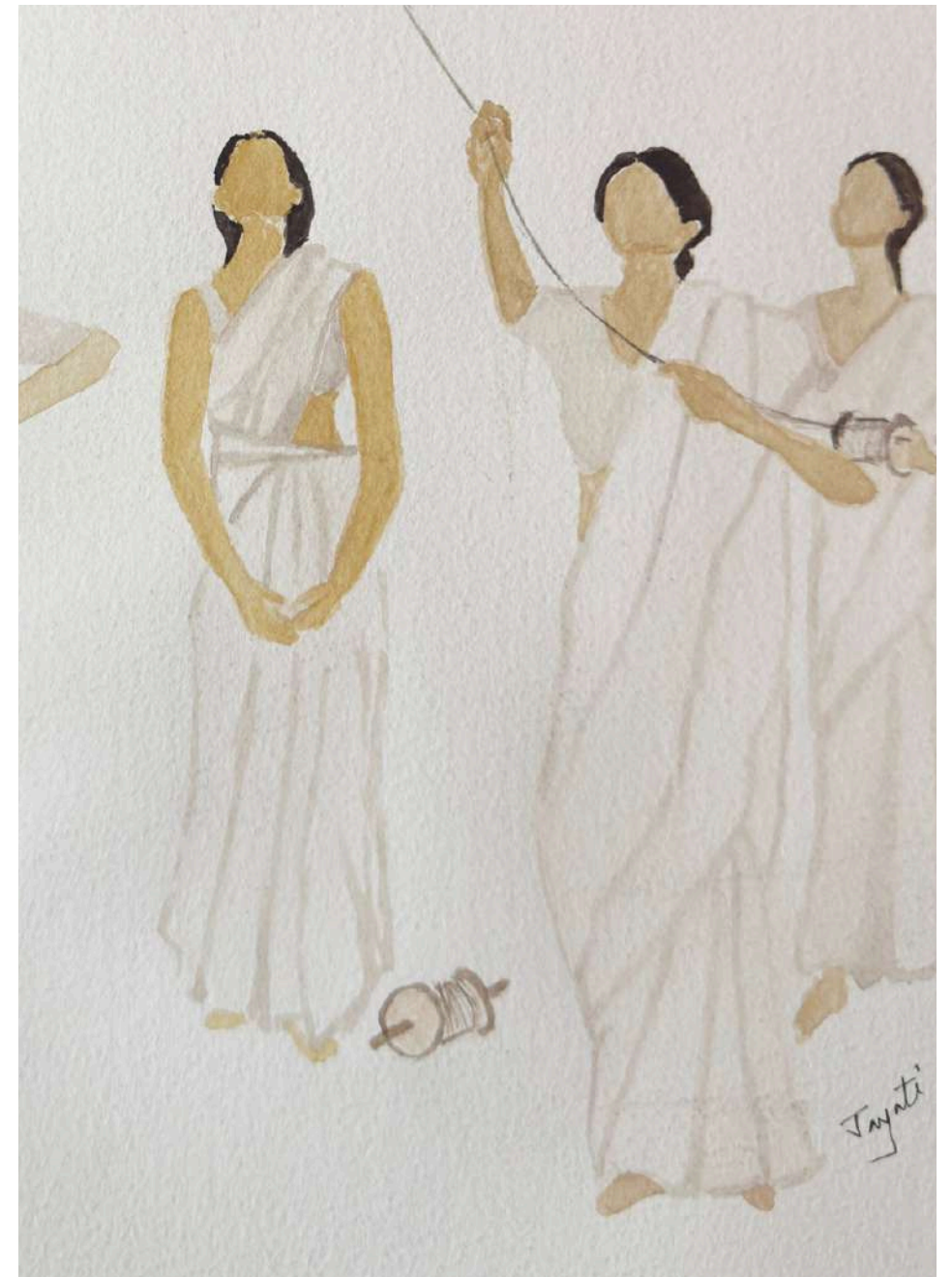
Detail shot

Women at leisure
Watercolor on coldpress 100% cellulose
watercolor paper 300GSM
8.3 X 11.7 in



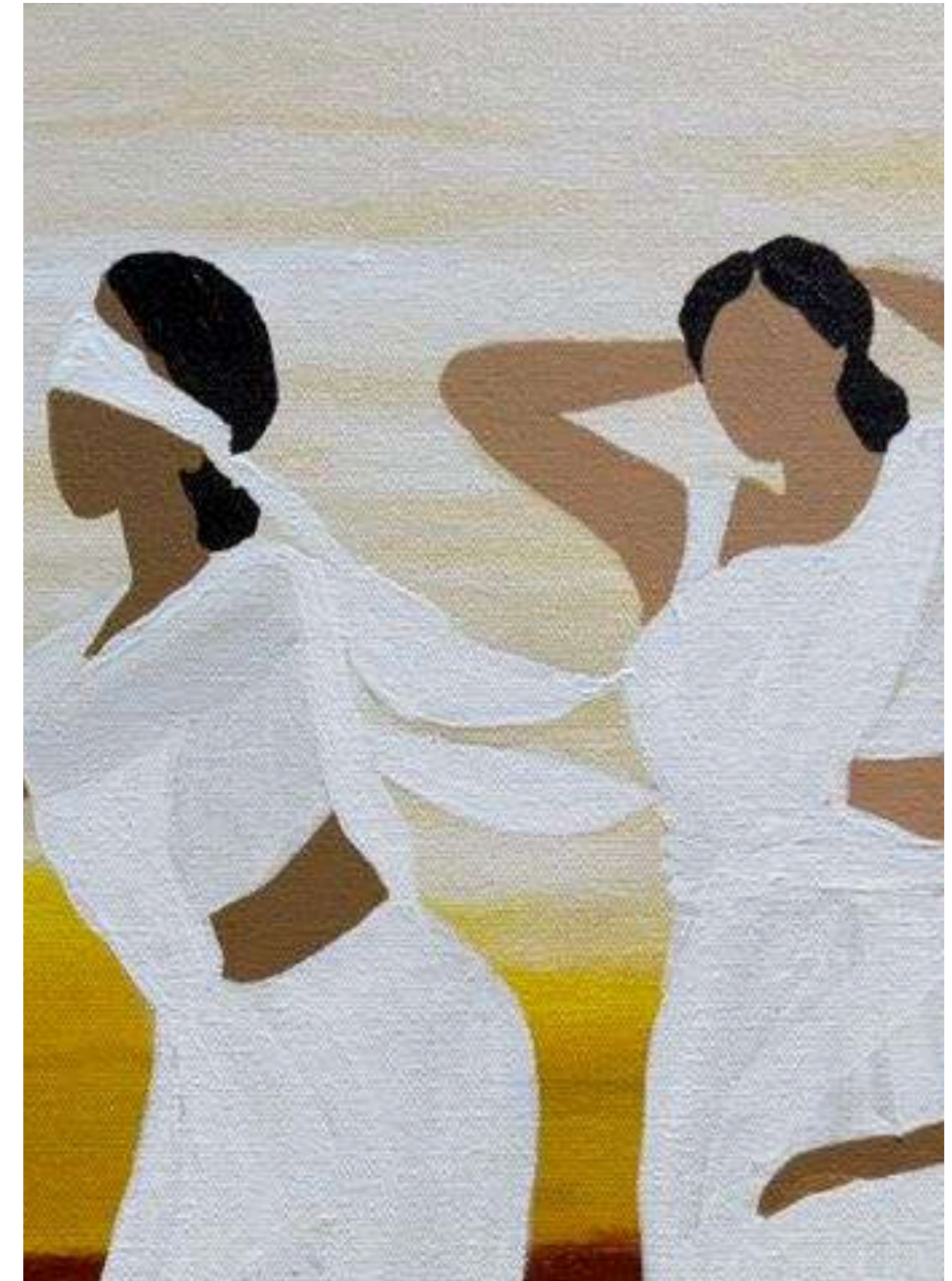
Detail shot

Women at leisure
Watercolor on coldpress 100% cellulose
watercolor paper 300GSM
8.3 X 11.7 in



Detail shot

Women at leisure
Watercolor on coldpress 100% cellulose
watercolor paper 300GSM
11.7 X 16.5 in



Detail shot

Ankh micholi
Watercolor on coldpress 100% cellulose
watercolor paper 300GSM
36 X 24 in



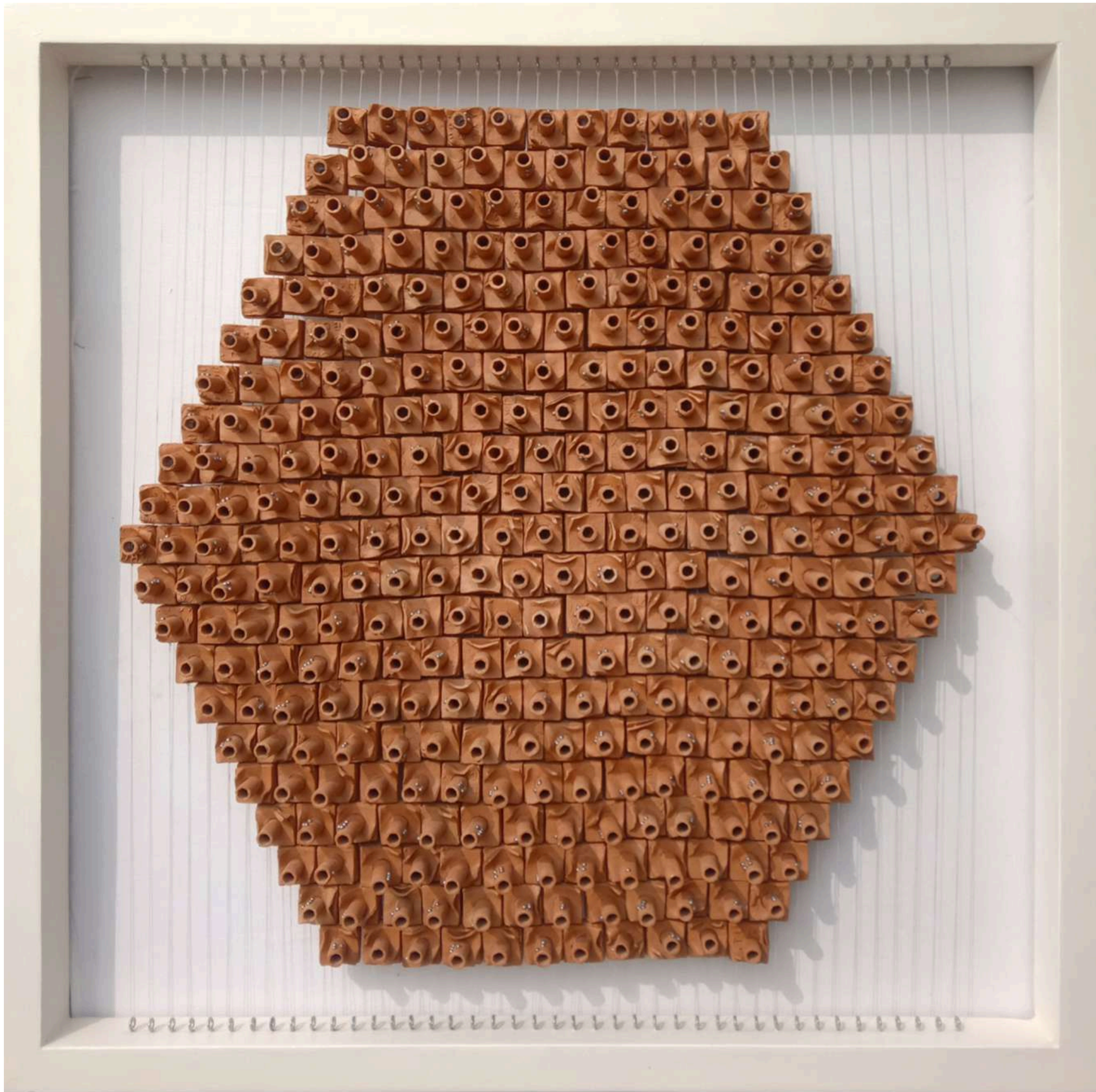
Detail shot

Khel
Watercolor on coldpress 100% cellulose
watercolor paper 300GSM
36 X 24 in

VIJAYA CHAUHAN

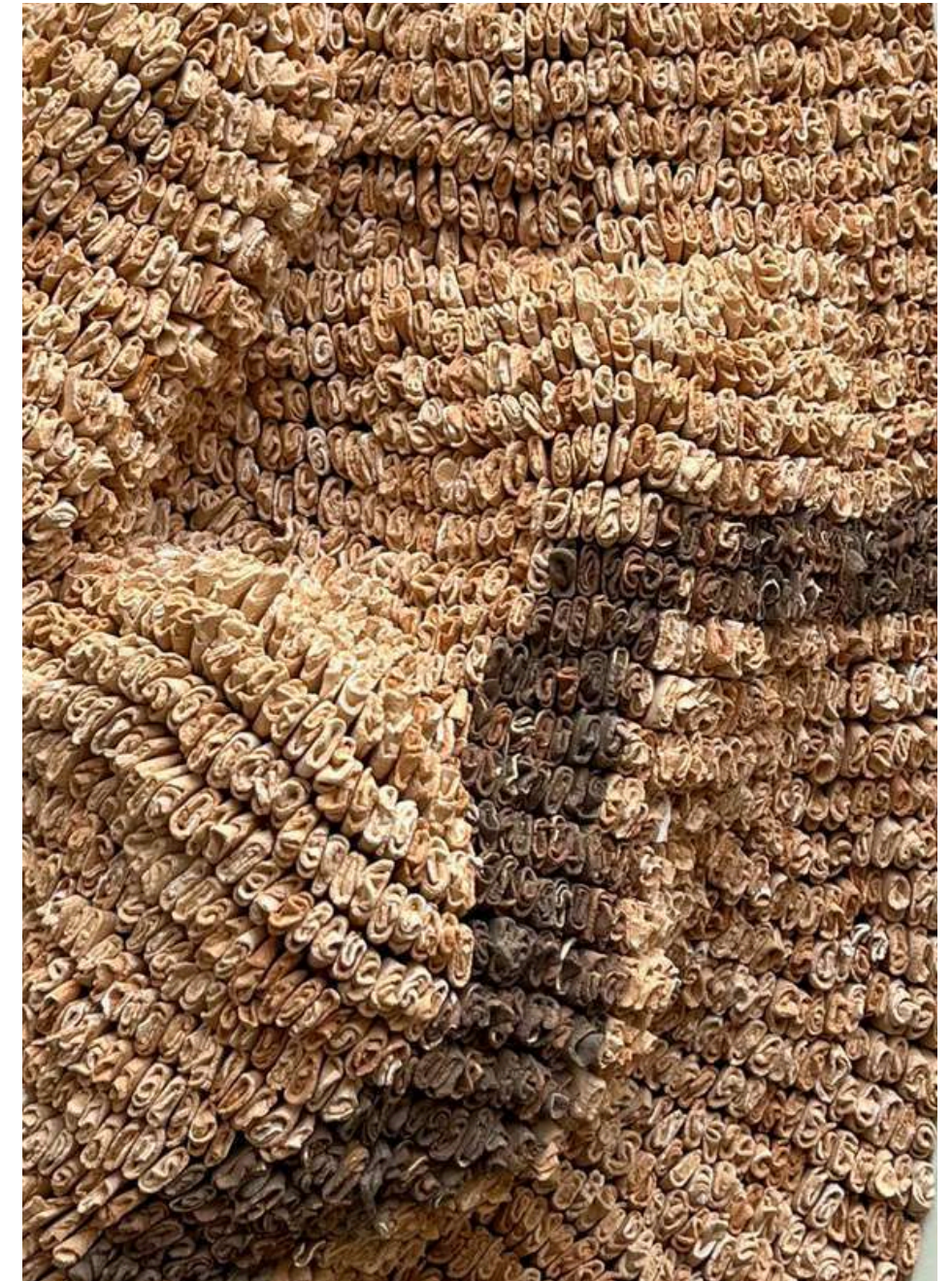
Vijaya, a Post-Diploma holder in Printmaking from MS University, Baroda, is a distinguished artist celebrated for her impactful work. With accolades such as the Lalit Kala Award for Graphics in both the Artist and Student categories, her art is showcased in numerous exhibitions across India and the UAE, and is included in various private collections.

Vijaya's art emphasizes the balance between social and moral behavior, using durable materials like stone, terracotta, and ceramics. Her innovative approach incorporates Braille text and outdated technologies like the typewriter, highlighting the intersection of communication and art. Inspired by her experiences with visually impaired friends, Vijaya integrates tactile elements into her sculptures, creating pieces that offer a sensory dialogue.



Side shot

Smart association
Terracotta, steel, nylon thread and painted wood
29.6 X 3 X 29.6 in



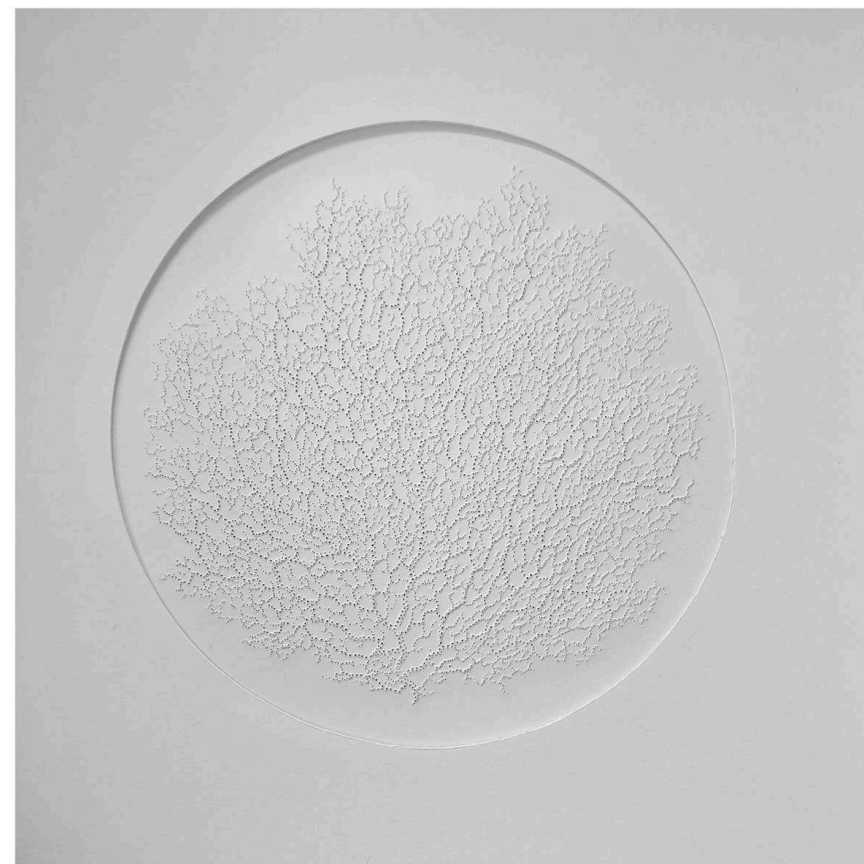
Detail shot

Silent expression 2
Stoneware and painted wood
26.9 X 5.07 X 17.9 in

GAYATRI HALDER

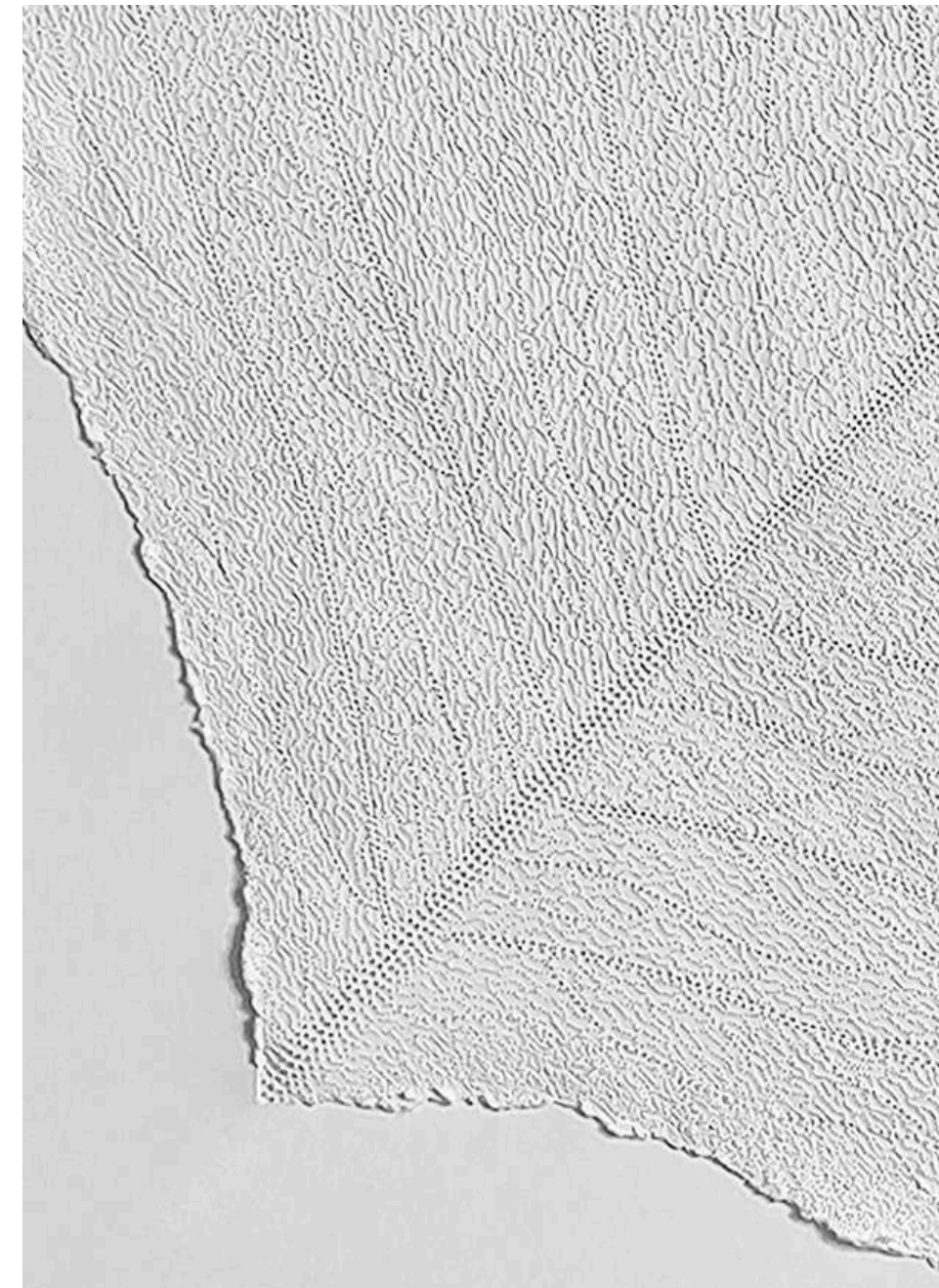
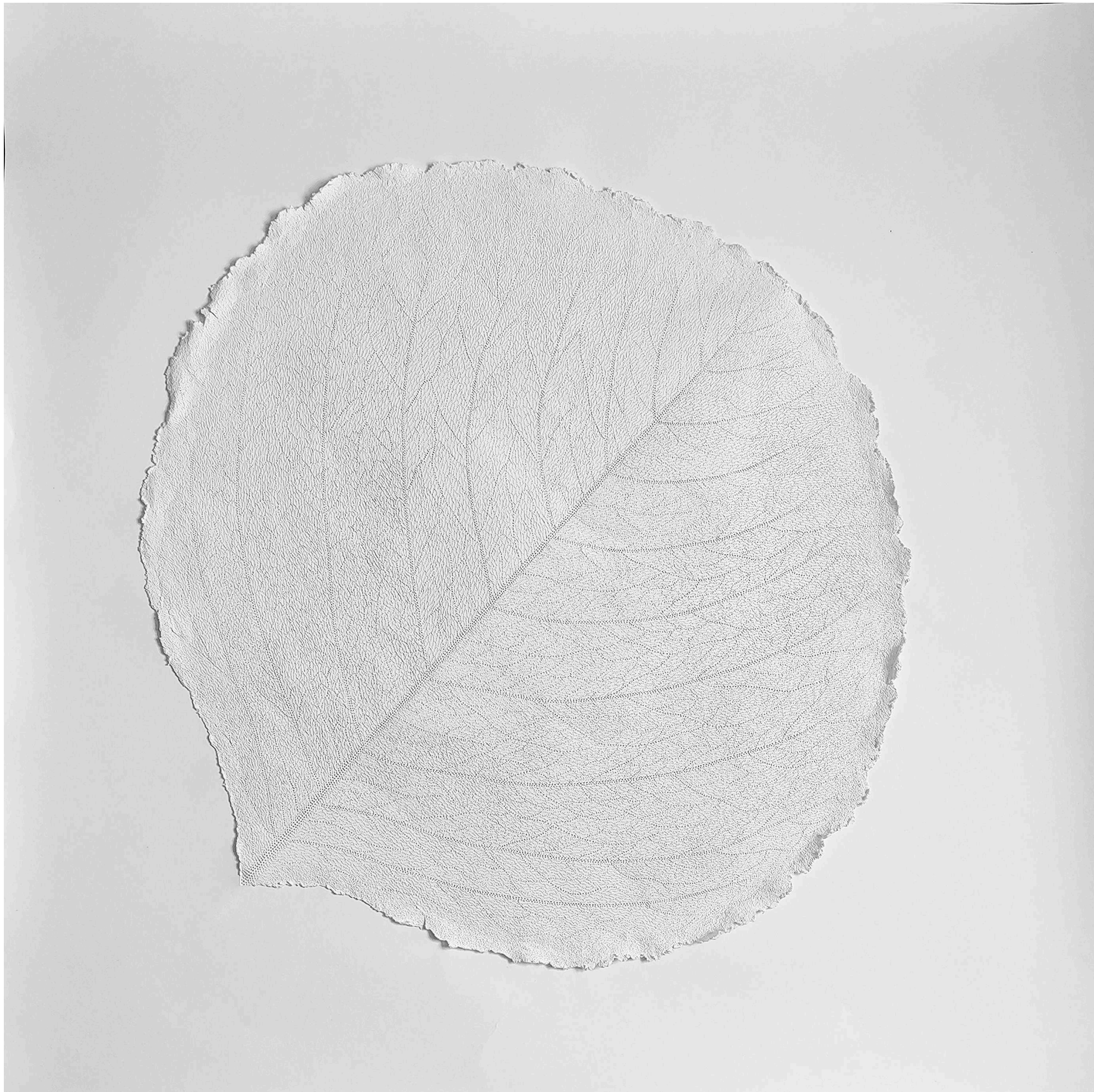
Gayatri Acharjee Halder, born in Diamond Harbour, West Bengal, India in 1995. Through her works, she sheds light on the effects of environmental degradation, focusing on issues like climate change and coral bleaching, while also celebrating nature's resilience and ability to adapt to adverse situations.

Using needles as her primary tool, Gayatri meticulously captures the subtlety of floral patterns, turning the creative process into a meditative journey. Paper serves as both the canvas and the subject of her art, symbolizing nature's ambiguity and purity. Through exhibitions across India and accolades such as the National Best Entry Prize for Drawing and Pastel Work, Gayatri continues to convey her message of harmony and serenity found in nature from her home and studio in Kalyani, West Bengal.



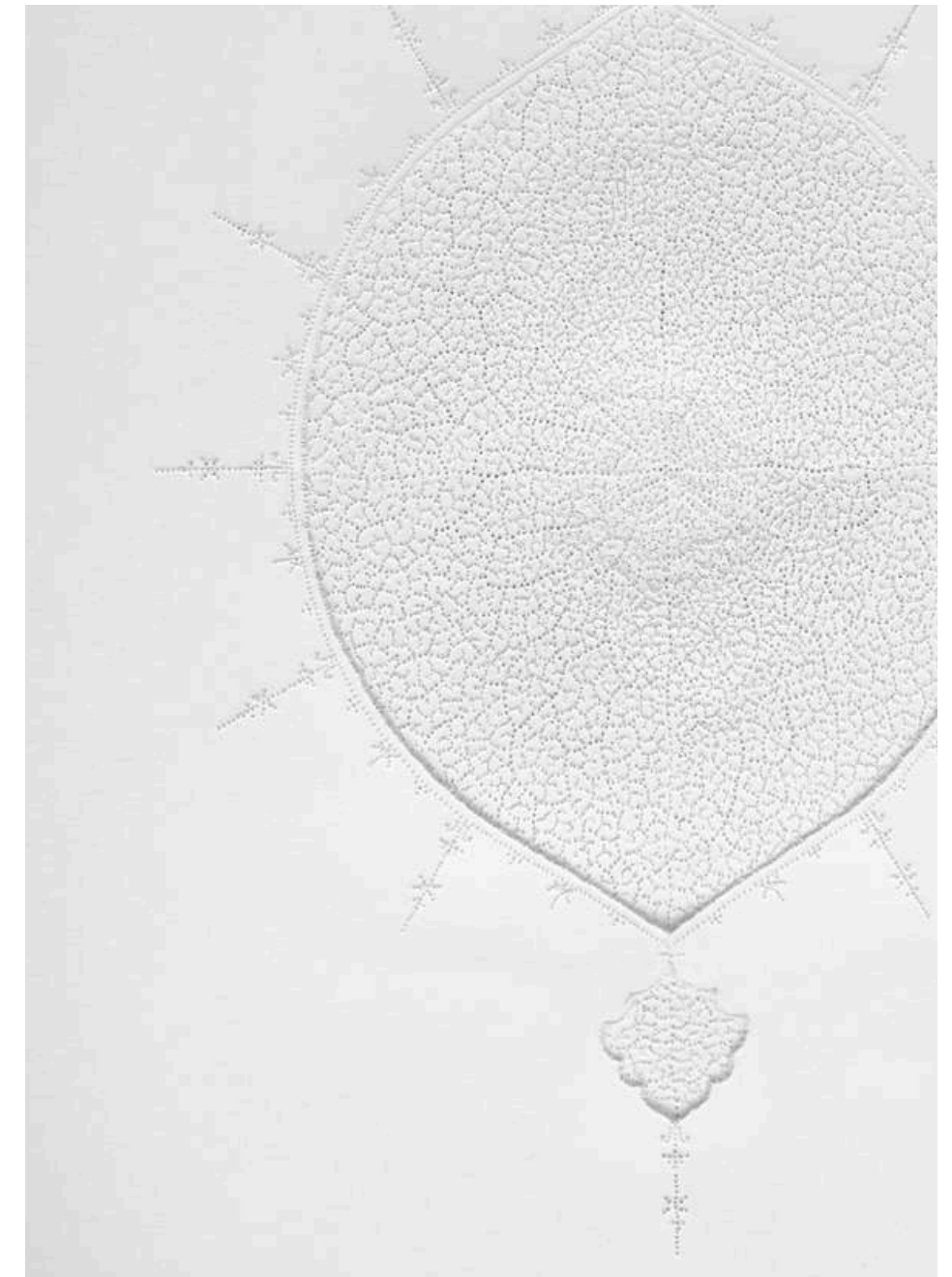
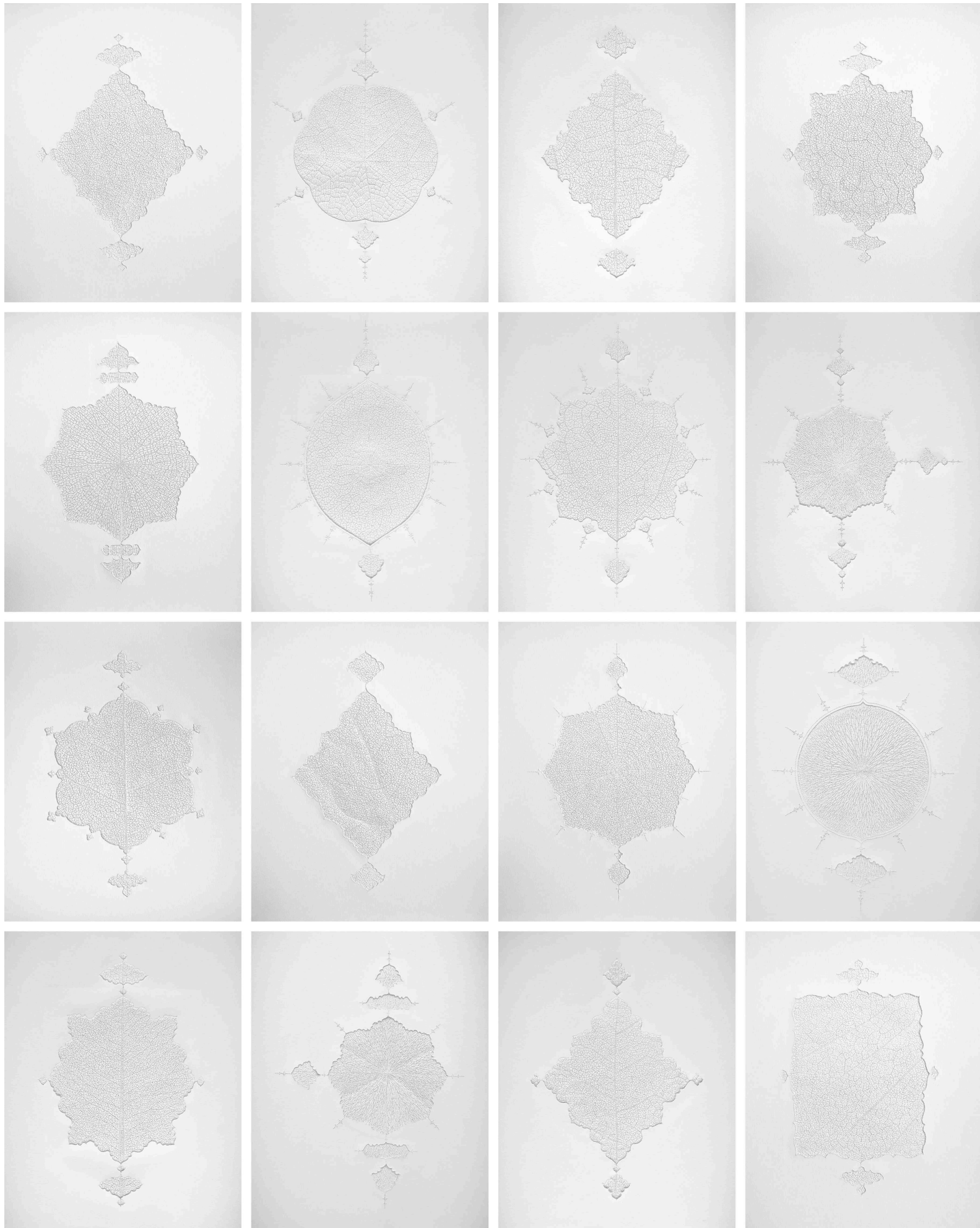
Detail shot

The tale of profound (III)
Needle drawn on layer of paper
10 X 10 in each
Overall 21 X 32 in (set of 6)



Detail shot

Conspicuous (V)
Needle price drawing pasted on paper
34 X 34 X 0.3 in



Detail shot

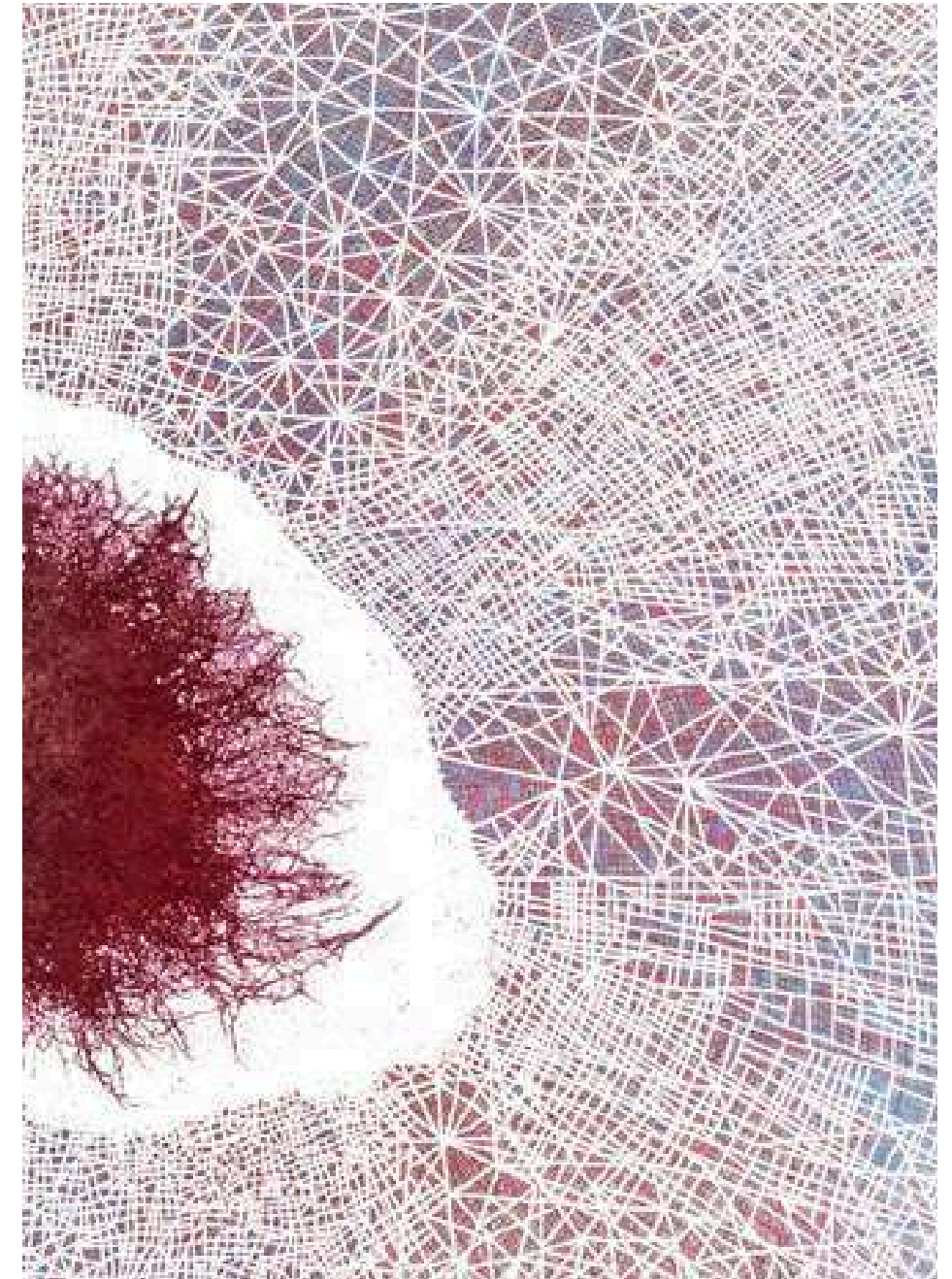
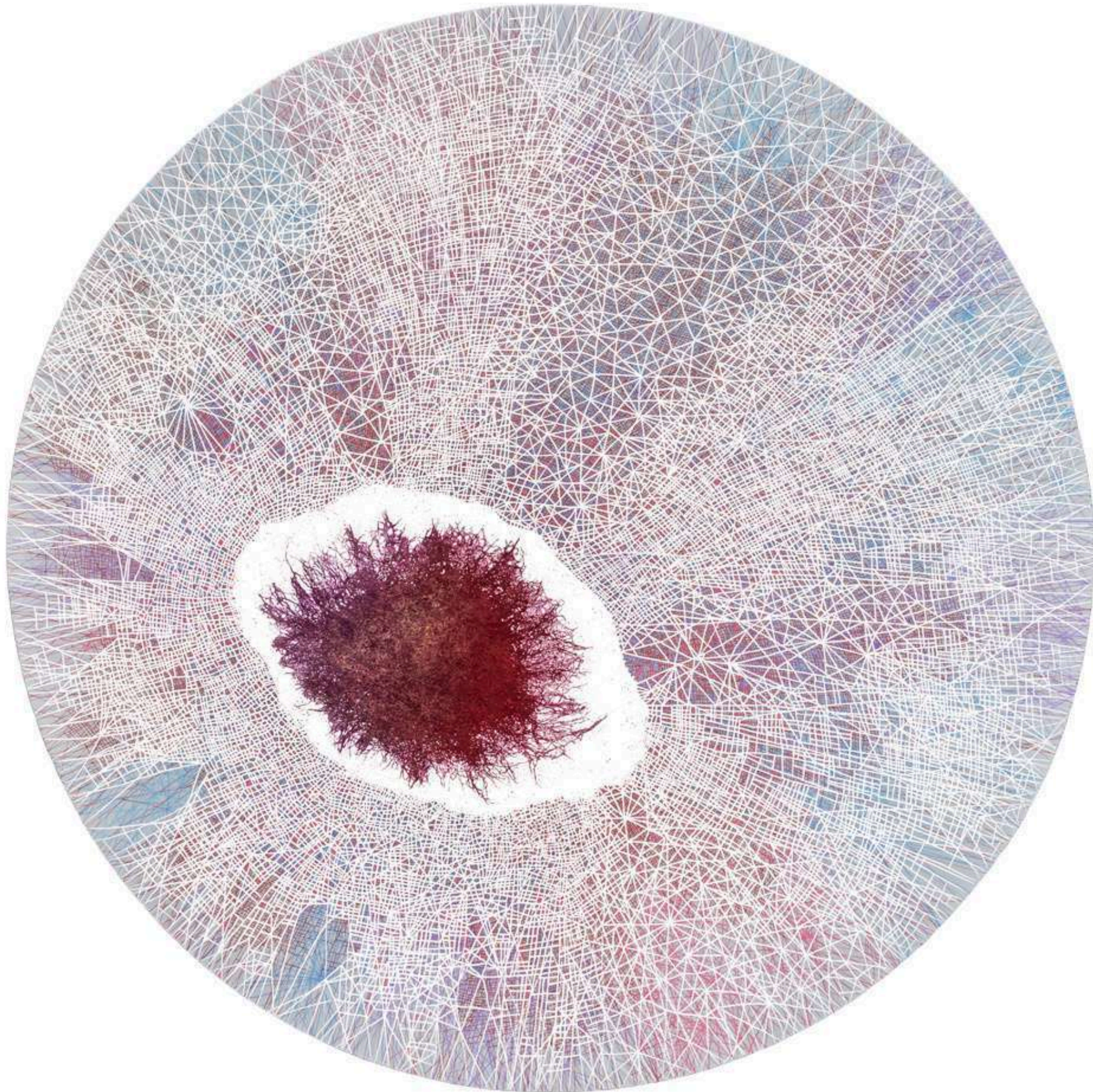
Reminiscence
Needle drawn on layer of paper
12 X 10 in each
Overall 51 X 43 in (set of 16)

DHARA MEHROTRA

Dhara Mehrotra (b. 1979, Bengaluru, India) explores patterns in nature and human systems through her art, blending elements of science and aesthetics. Influenced by mycelium, her work employs diverse media—canvas, acrylic, paper, jute, and fibre—to create tactile, layered compositions.

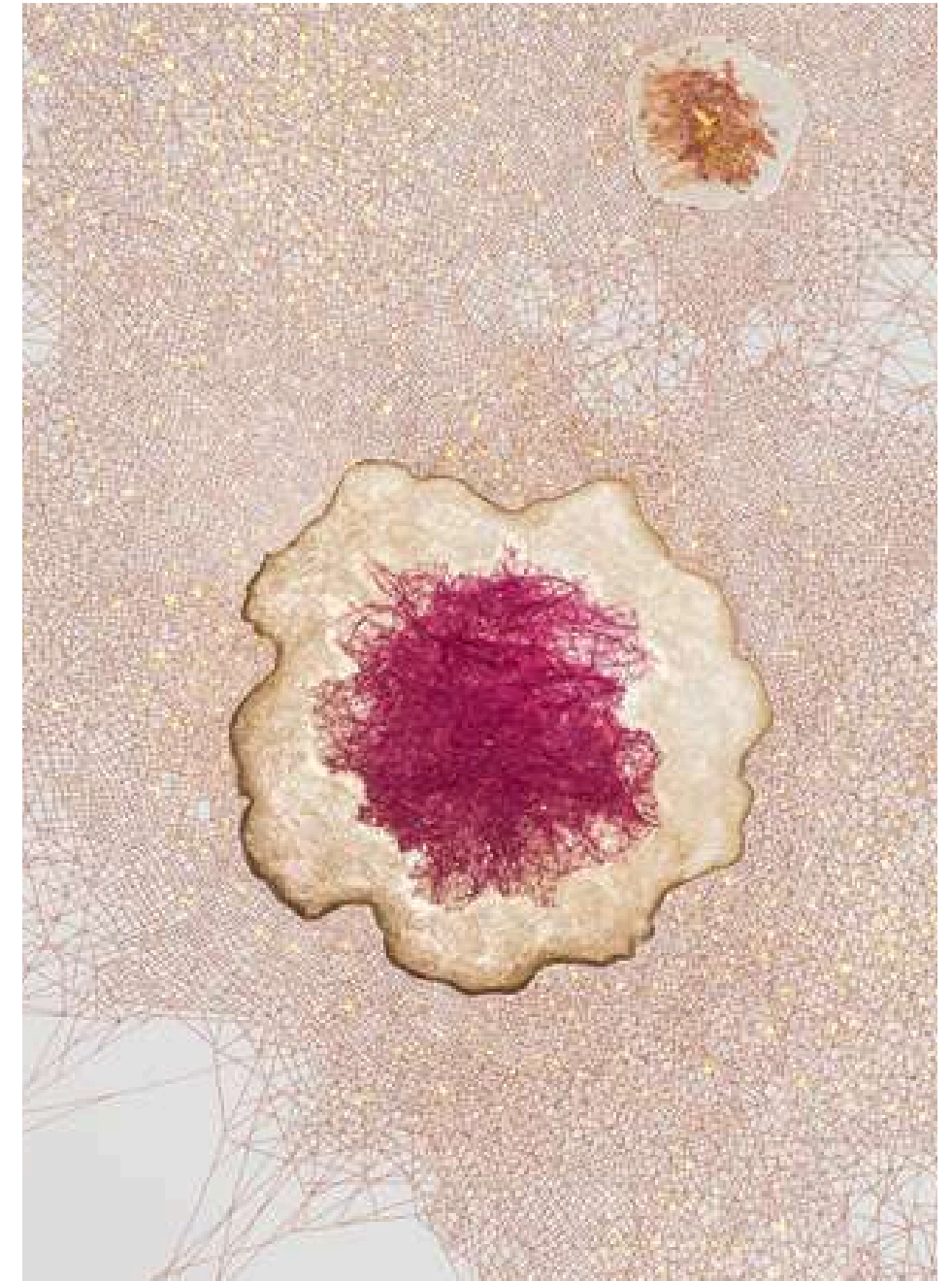
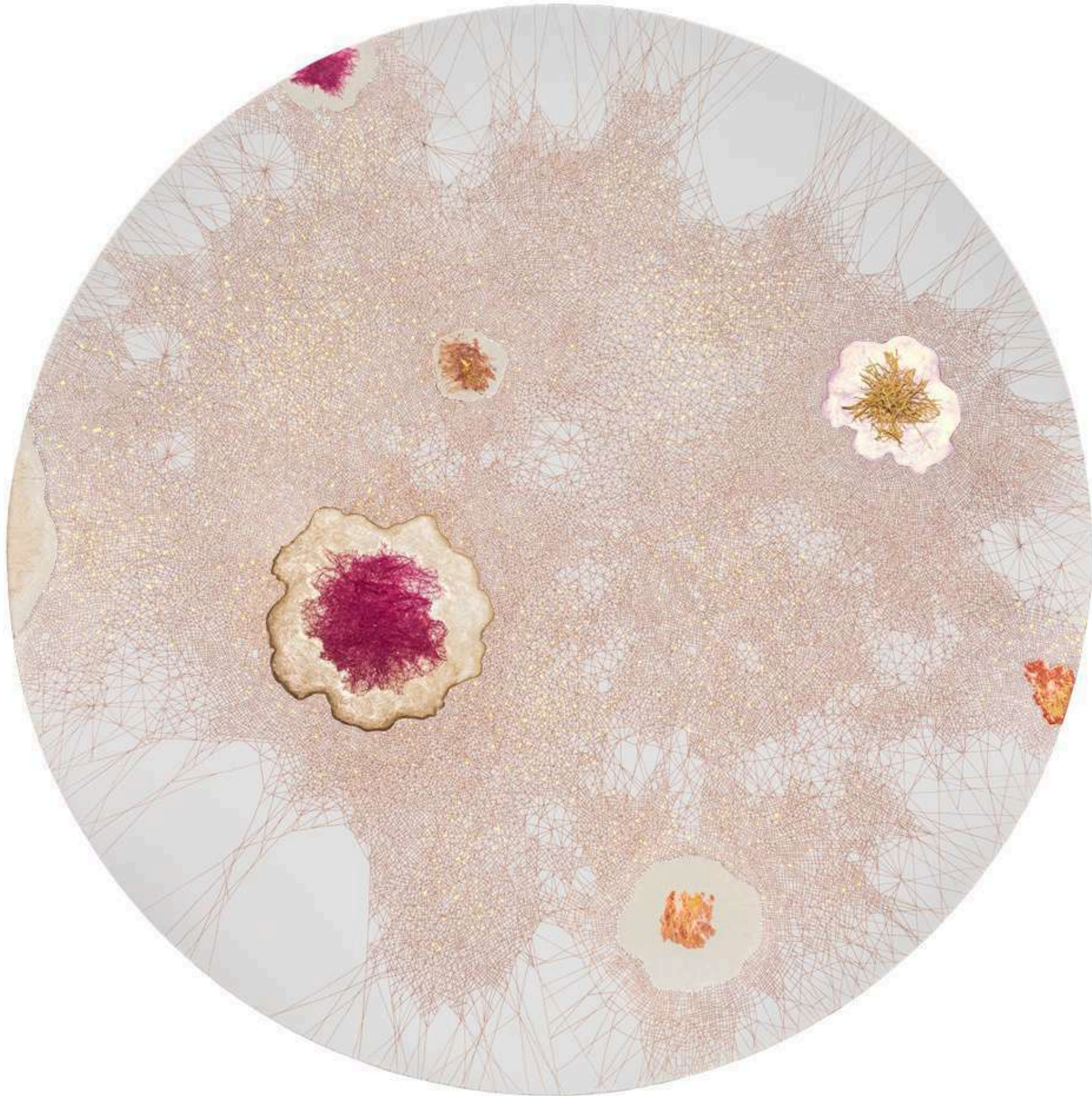
Notable exhibitions include shows at Anant Art and Aicon Gallery, and she has received prestigious fellowships from Harvard and the Indian Ministry of Culture.

Her art reflects on organic and abstract forms, using materials like jute and coir to symbolize interconnectedness and time. Her piece "Of Warps and Wefts VII" embodies these themes, portraying a woven tapestry of life and materiality.



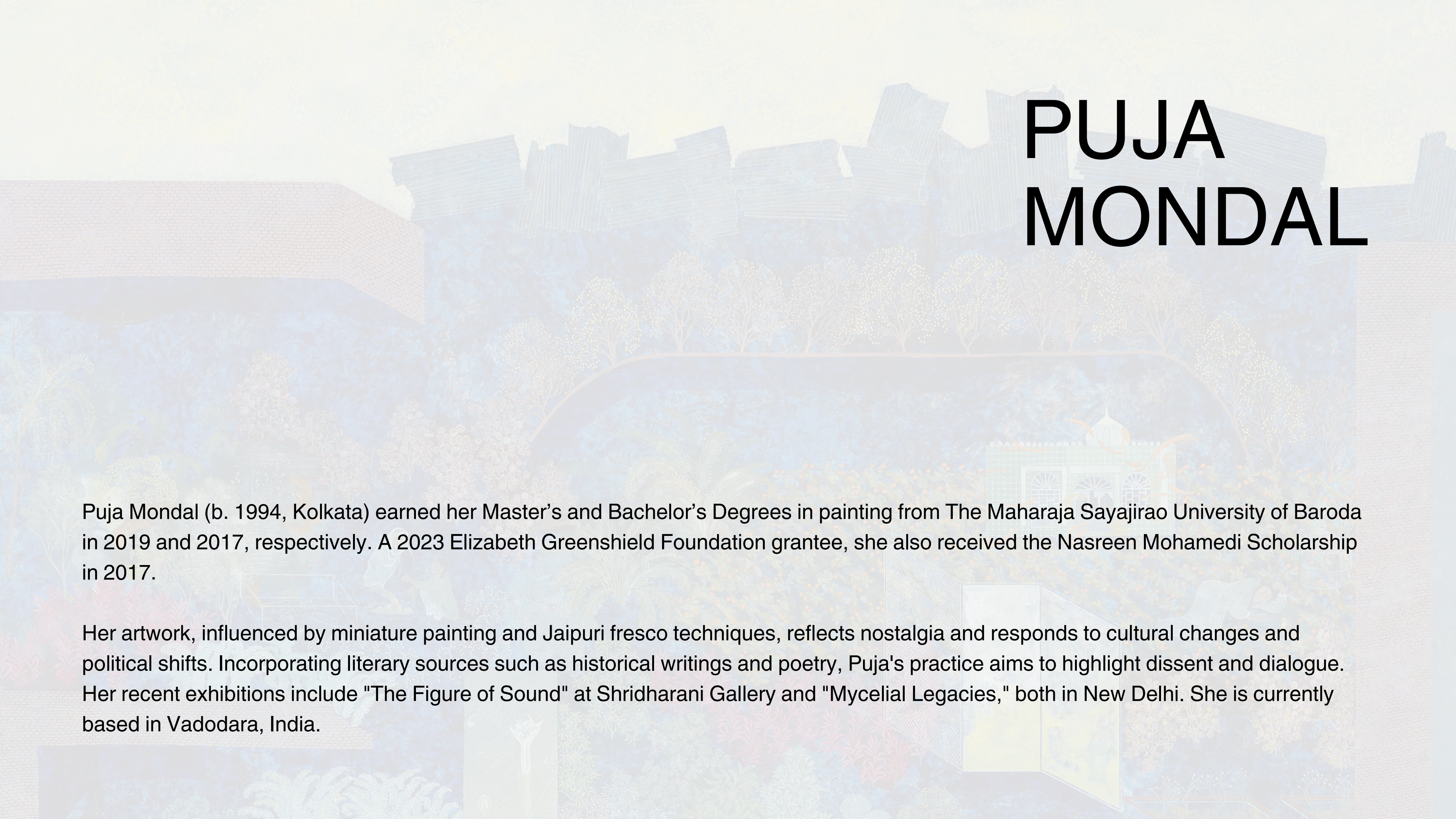
Side shot

Nexus III
Acrylic, fibre and inks on canvas
36 in diameter



Side shot

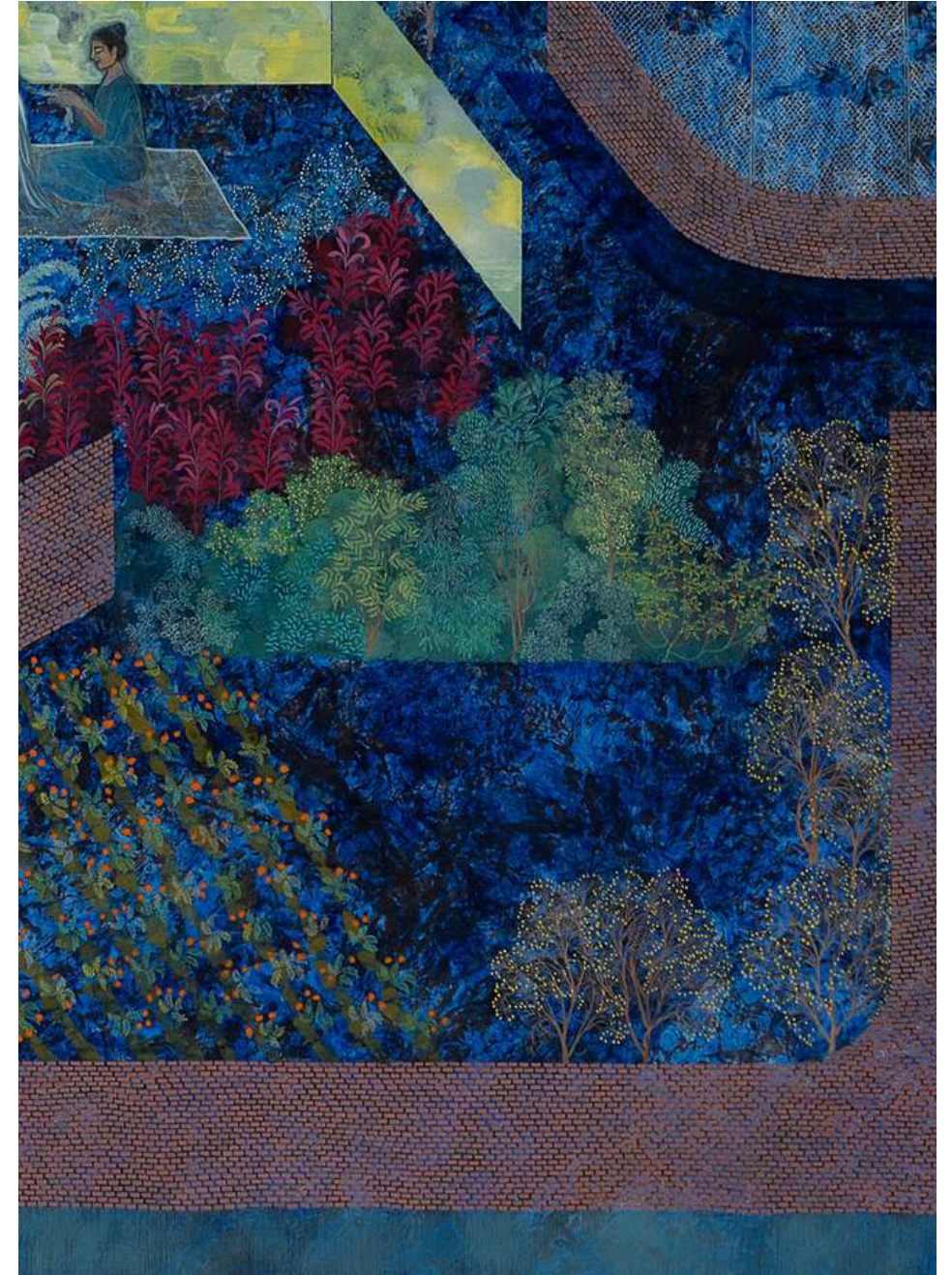
Of warps and wefts VII
Acrylic, fibre and inks on canvas
36 in diameter



PUJA MONDAL

Puja Mondal (b. 1994, Kolkata) earned her Master's and Bachelor's Degrees in painting from The Maharaja Sayajirao University of Baroda in 2019 and 2017, respectively. A 2023 Elizabeth Greenshield Foundation grantee, she also received the Nasreen Mohamedi Scholarship in 2017.

Her artwork, influenced by miniature painting and Jaipuri fresco techniques, reflects nostalgia and responds to cultural changes and political shifts. Incorporating literary sources such as historical writings and poetry, Puja's practice aims to highlight dissent and dialogue. Her recent exhibitions include "The Figure of Sound" at Shridharani Gallery and "Mycelial Legacies," both in New Delhi. She is currently based in Vadodara, India.



Detail shot

Listening to the grasshoppers V
Watercolour on Nepali-paper Pasted on Plywood
68 x47 Inches

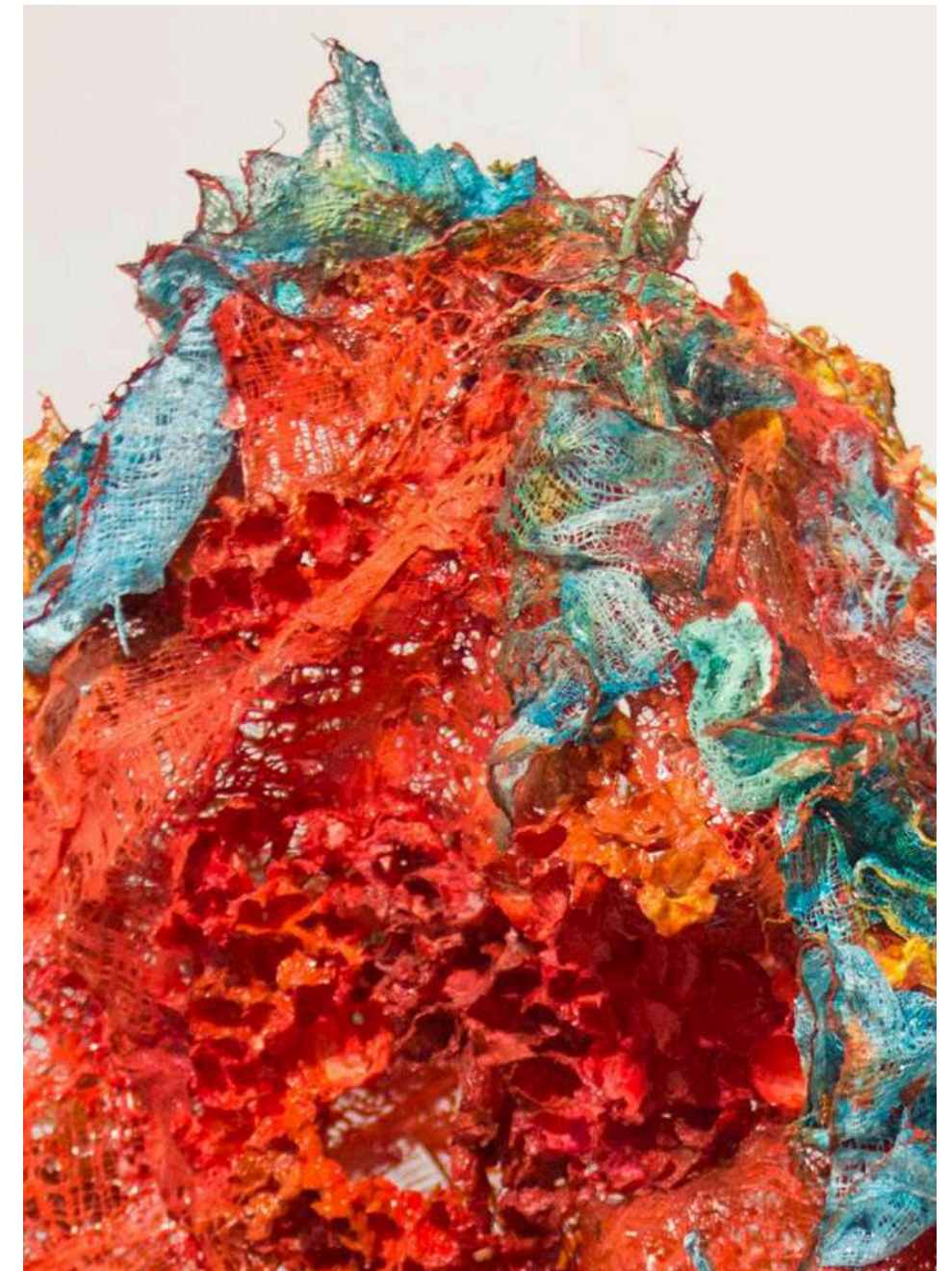


NANDITA MUKAND

Nandita Mukand, a Singapore-based artist, explores belonging and interconnection through sculpture, installation, and painting. She juxtaposes materials like medical gauze and iron nails with natural elements to bridge the artificial and natural worlds.

Her work, inspired by neuroplasticity and Buddhist texts, reflects on growth and decay in both nature and the urban mind. Nandita's art has been featured at major exhibitions including the National Gallery Singapore and the Sovereign Asian Art Prize.

With a background in Electronics Engineering and a successful corporate career, she transitioned to full-time art making in 2008.



Detail shot

Onwards 1
Medical gauze, plaster, resin, acrylics, wire
31 X 27 X 35 in



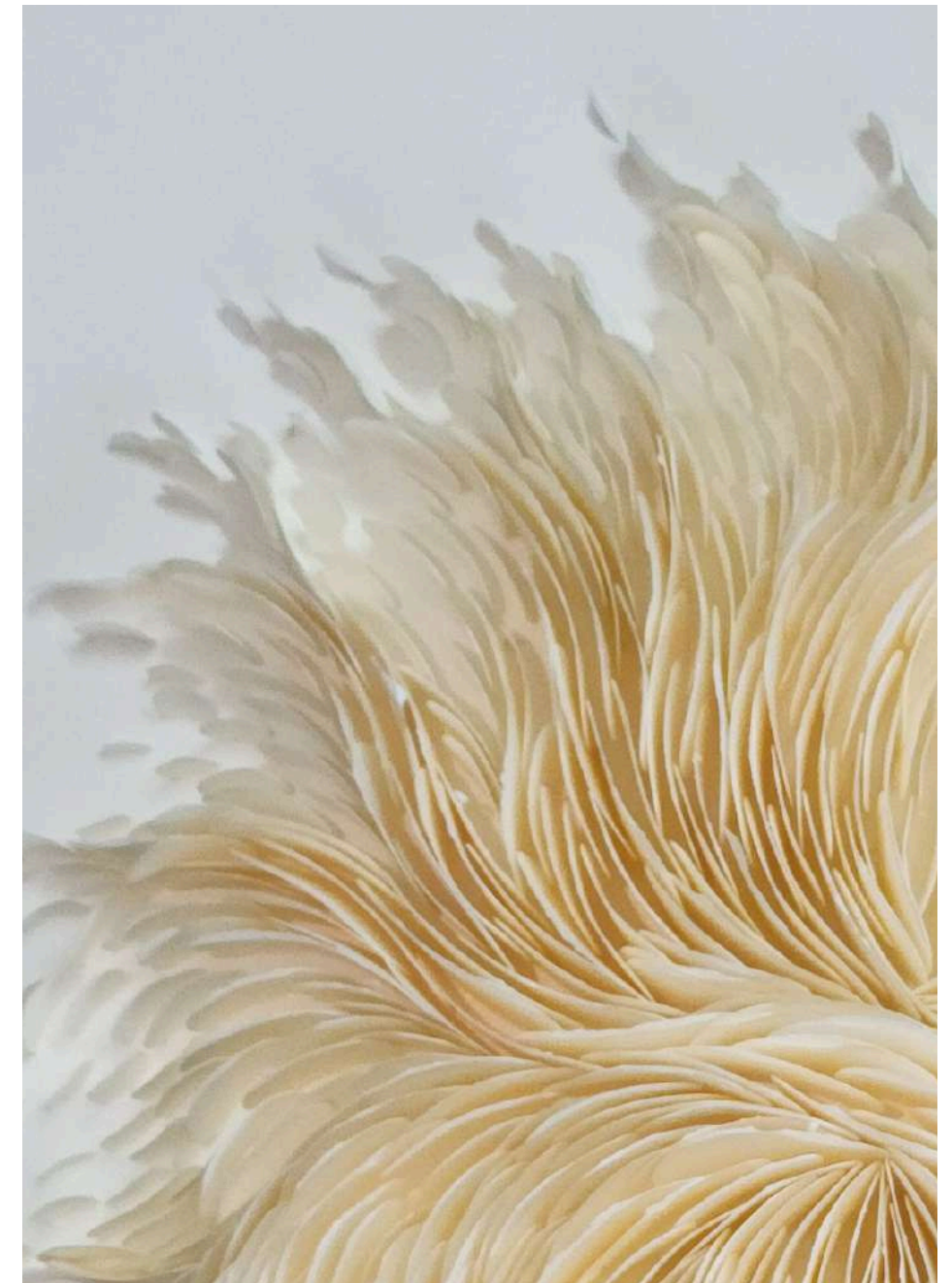
Detail shot

Onwards 3
Medical gauze, plaster, resin, acrylics, wire
20 X 29 X 28 in

KHANJAN MARU SONI

Khanjan, a Post-Diploma holder in Printmaking from MS University, Baroda, is a distinguished artist recognized for her compelling body of work. She has garnered accolades such as the Lalit Kala Award for Graphics in both the Artist and Student categories. Her art is prominently featured in numerous exhibitions across India and the UAE, and is included in various private collections.

Khanjan's work serves as a profound reflection of her innermost emotions, often transcending verbal expression to communicate what words cannot. Central to her artistic narrative is the theme of metamorphosis—mirroring the human journey of evolution and adaptation. Her art captures the essence of personal growth, from the innocence of childhood to the complexity of adulthood, embracing both the joys and challenges of life. The concept of change as a means of survival is vividly portrayed in her pieces, highlighting her ongoing exploration of transformation and resilience.



Detail shot

Apricity 2
Paper relief
24 X 24 in



Detail shot

Beyond the show 1
Paper relief
36 X 24 in



Detail shot

Beyond the show 2
Paper relief
36 X 24 in



HANSIKA SHARMA

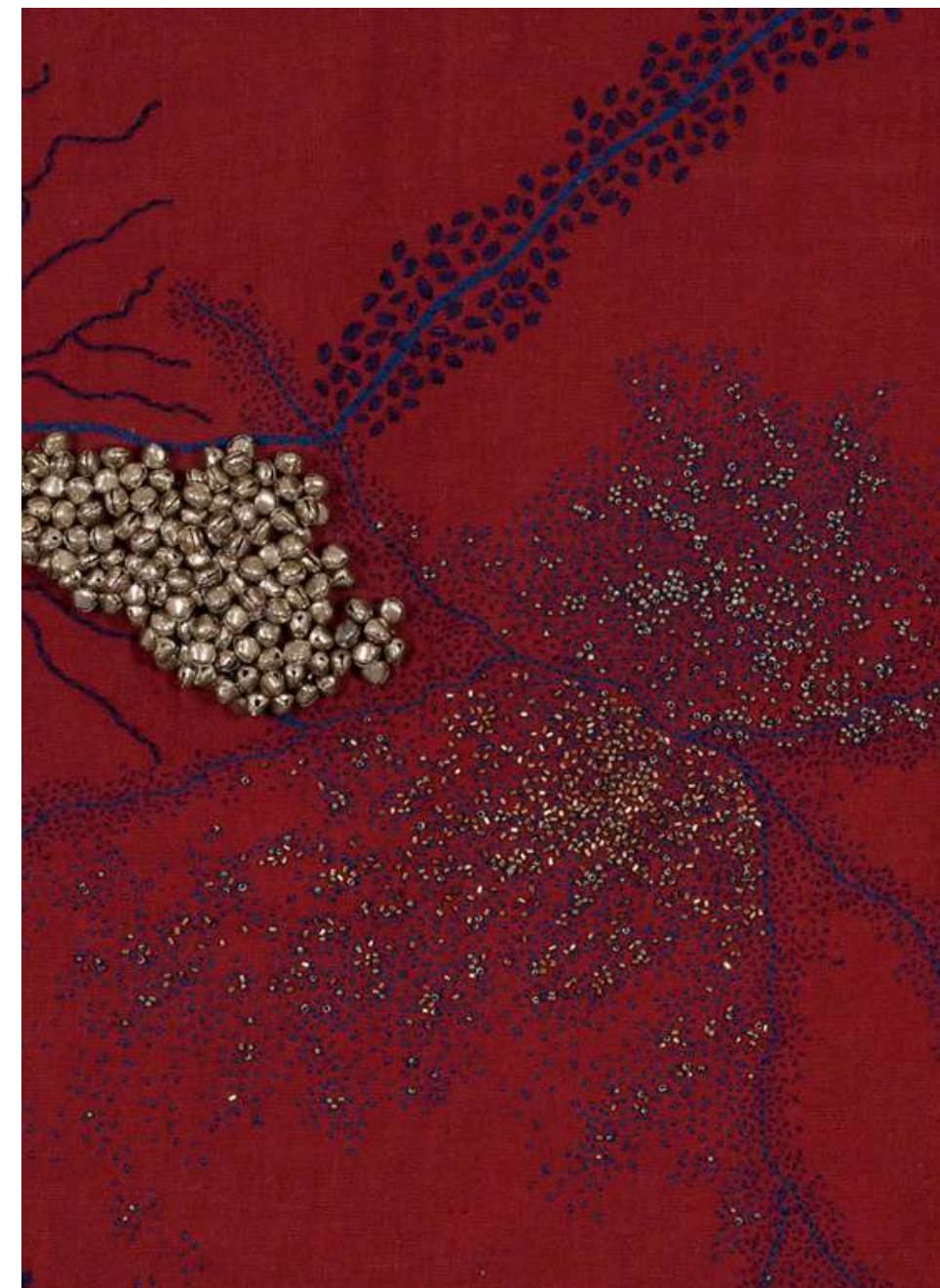
Hansika Sharma, a textile artist, explores indigo and embroidery to reflect personal transformation and historical significance. Her work combines the color's alchemical journey with themes of melancholy and tranquility, depicted through intricate embroidered threads and organic forms.

Her recent projects include a two-year diary of growth and introspection, with notable exhibitions such as "Saw Myself Staring at Myself at the Bluest Mirror" (2022) and "Xtant Roots" (2024). She has also showcased at "Beyond the Walls" (2018) and "Alchemy: Explorations in Indigo" (2019).



Detail shot

Old one mutate
Embroidery and beads on indigo dyed cotton
40.5 X 44 in



Detail shot

Ornaments of tragedy
Cotton thread, metal and beads on madder dyed cotton
44 X 38 in



KOPAL SETH

Kopal Seth, an artist based in Khurai, Madhya Pradesh, combines a rich educational background with global artistic experience, holding an MFA in Ceramics from the Rhode Island School of Design and a BFA in Painting from Maharaja Sayajirao University.

Her internationally recognized work addresses critical themes such as overpopulation, architecture, and the environmental impacts of human intervention. By integrating ancient forms with modern geometric abstractions, Kopal creates urban landscapes that reflect the tension between tradition and urbanization. Her pieces often combine textured fabrics with clay, offering tactile experiences that echo her personal and cultural narrative. Through her art, Kopal delves into emotional conflicts and the complexities of contemporary life, fostering reflection on individual and collective experiences. Her practice serves as a dialogue between past and present, revealing the unseen narratives that influence our understanding of the world.



Detail shot

Grasslands
Porcelain and wood
5.8 X 8 in each (Set of 7)



Detail shot

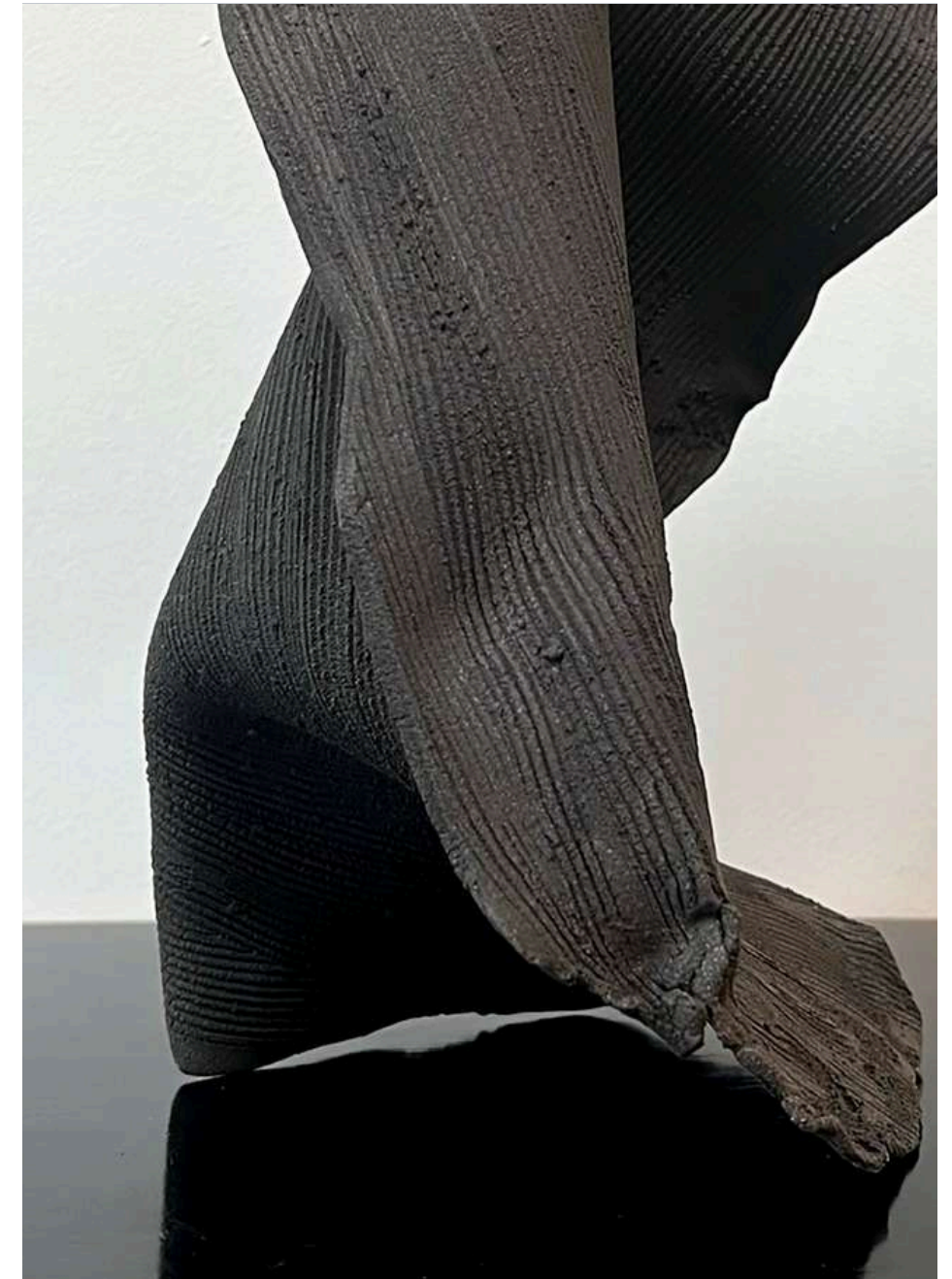
Might tend
Porcelain and wood
8 in diameter each (Set of 5)



REWATI SHAHANI

Rewati Shahani, originally from Mumbai, studied Political Science before moving to London to pursue Fine Art at Slade and Central St Martins, where she has lived since. Her series 'Exodus' continues her exploration of human geography, examining displacement, refugees, and diaspora through intricate and abstract maps.

She critiques 20th-century ethno-political boundaries and their impact on South Asia and Palestine, while also addressing modern displacements caused by climate change. Shahani's photographic prints capture the effects of environmental degradation, and her earthen ceramic sculptures contrast natural geological forms with human-made borders, envisioning a future of exploration rather than forced migration.



Detail shot

Black 1
Earthstone Ceramic
Approx 8 X 12 in



Detail shot

Porcelain 2
Approx 5 X 6 in



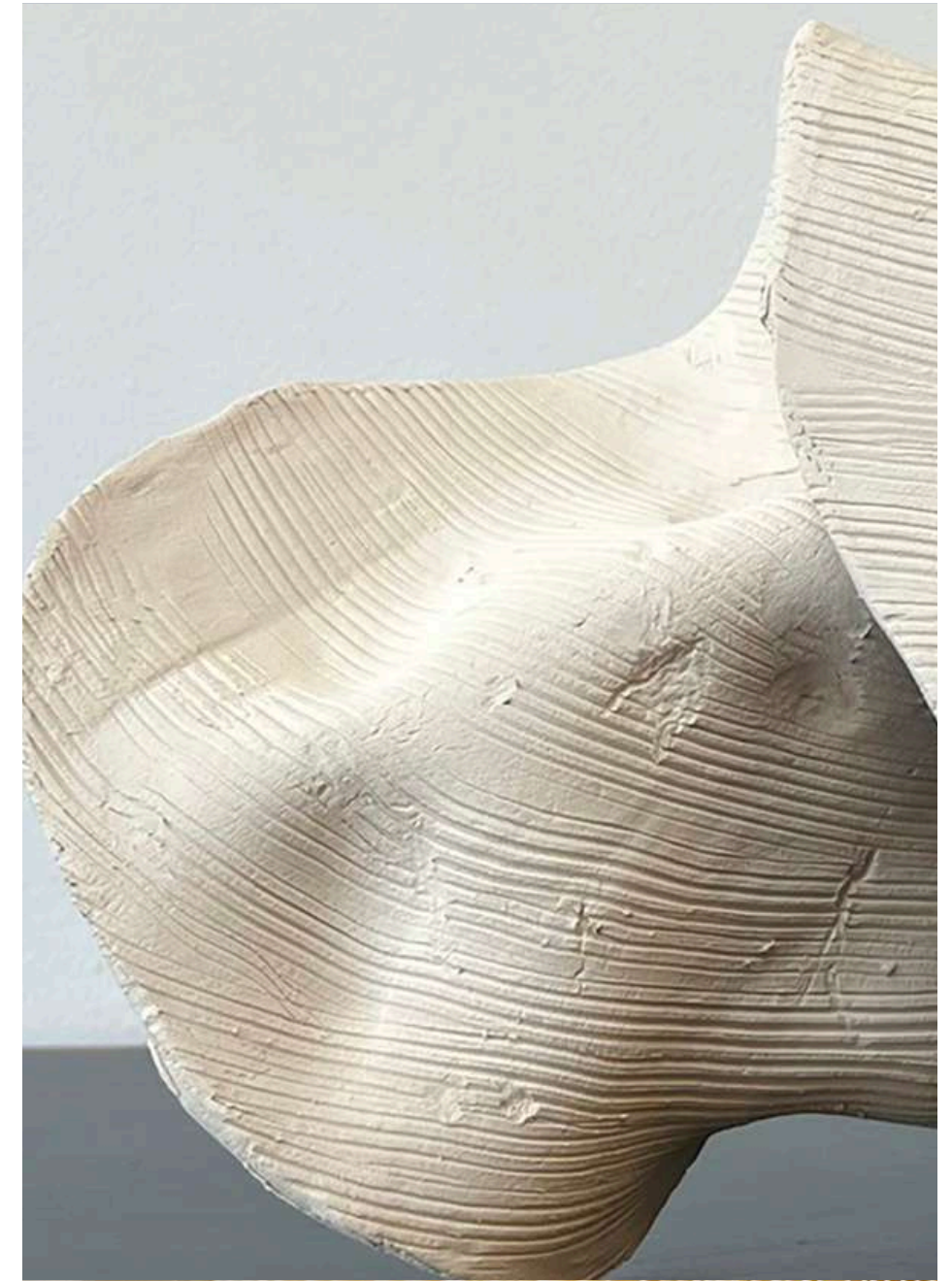
Detail shot

● Earthstone 1
Approx 5 X 8 in



Detail shot

Earthstone 2
Approx 5 X 8 in



Detail shot

Earthstone 3
Approx 8 X 12 in



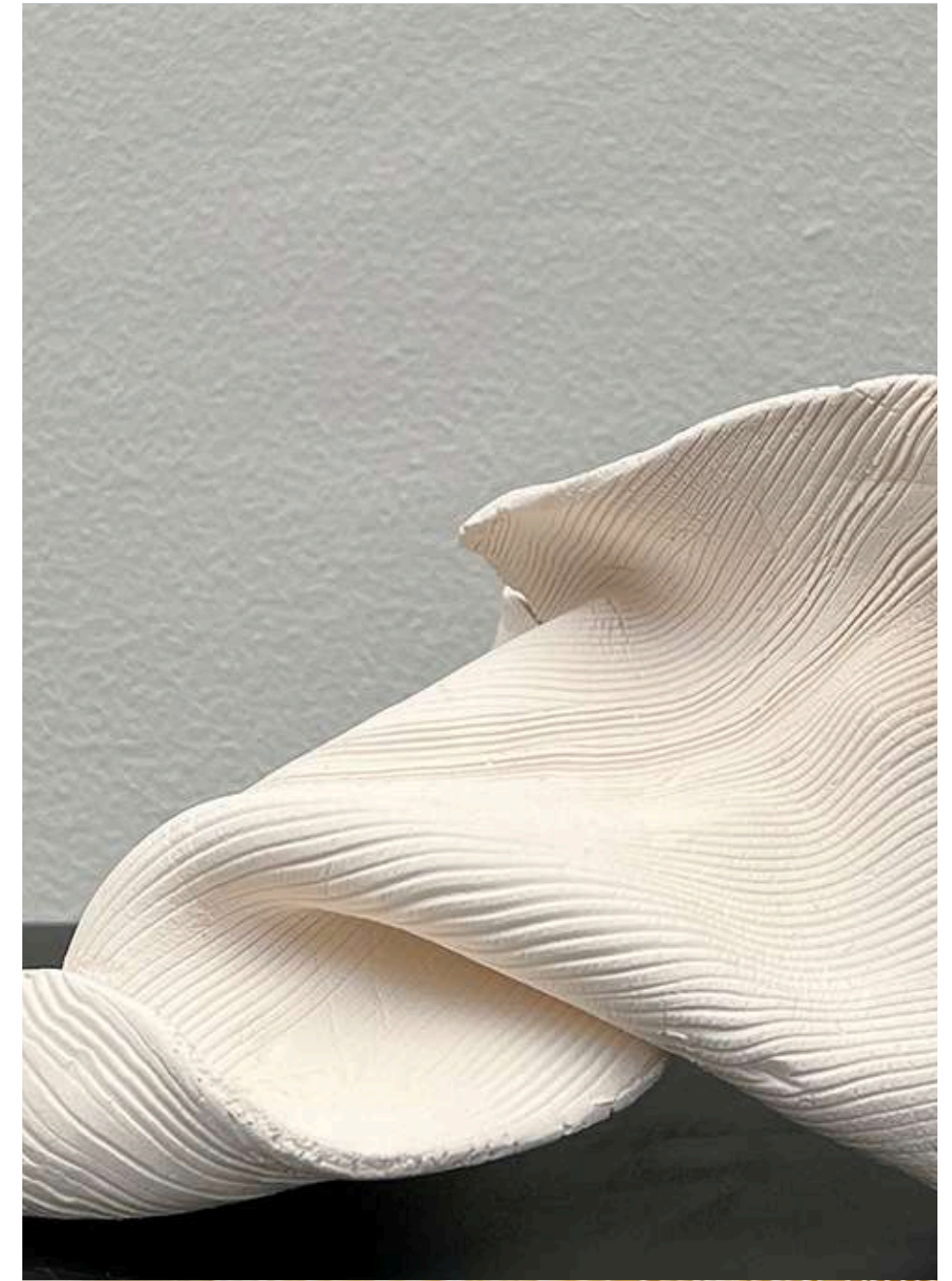
Detail shot

Porcelain 1
Approx 5 X 6 in



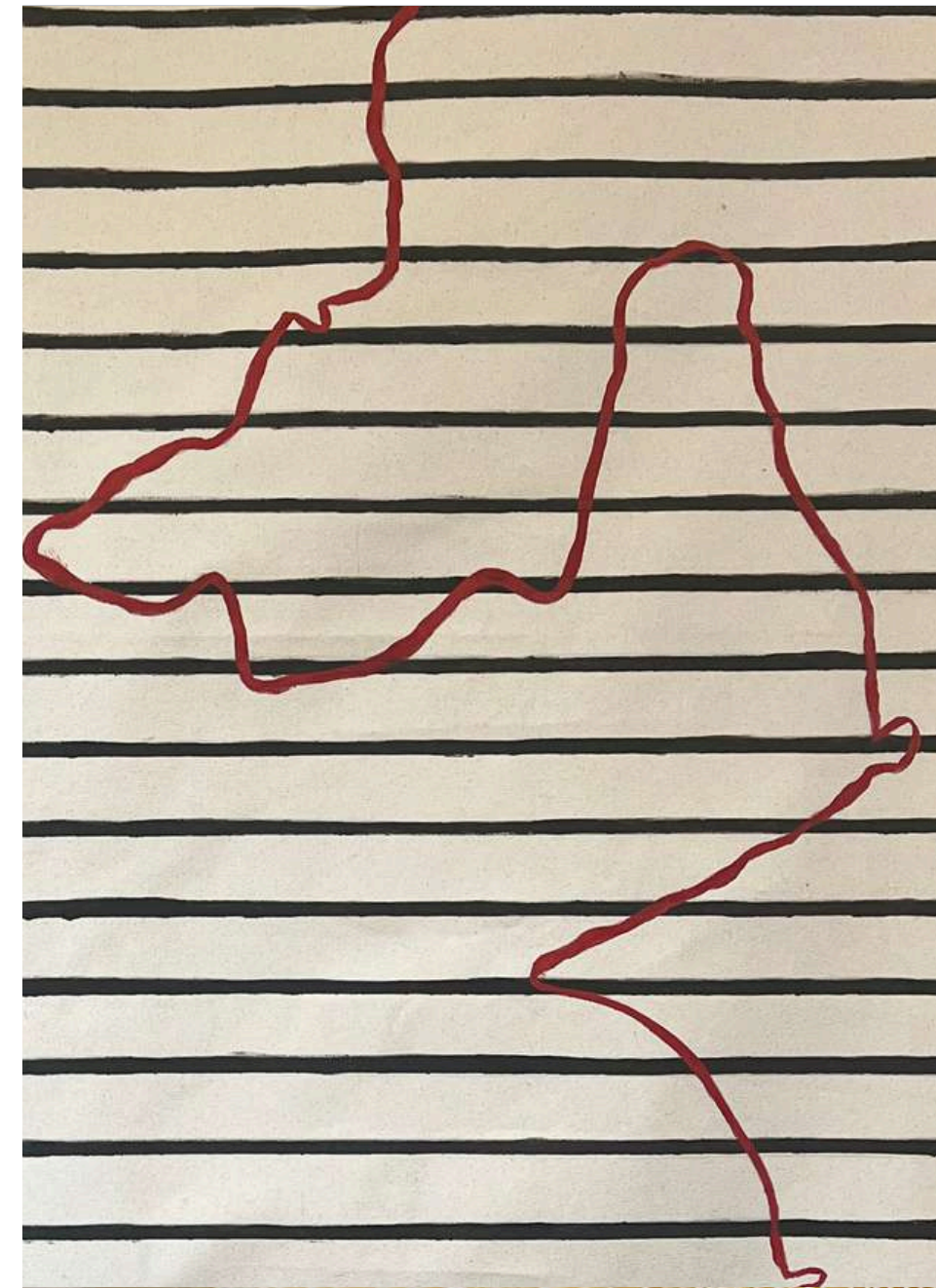
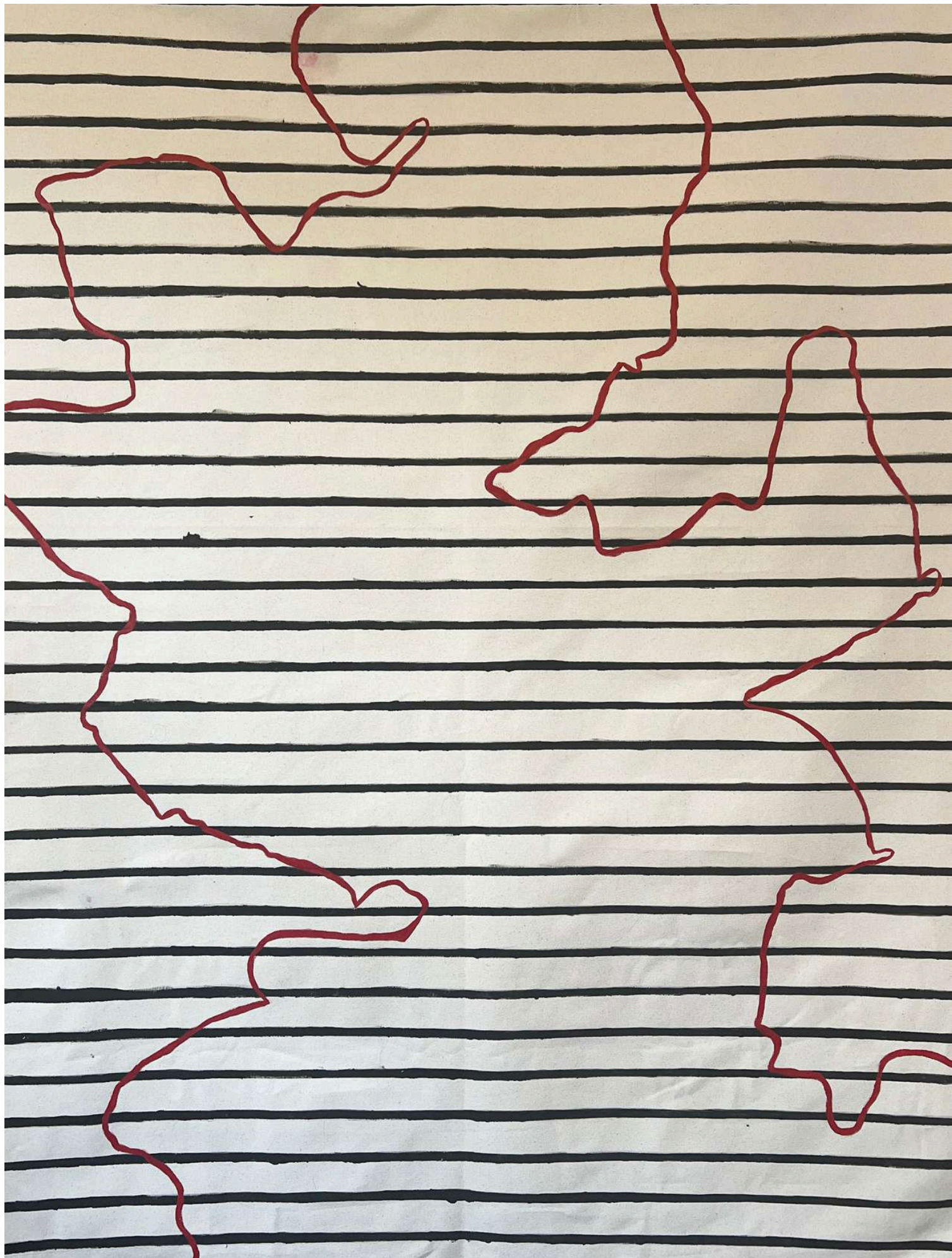
Detail shot

Porcelain 3
Approx 5 X 6 in



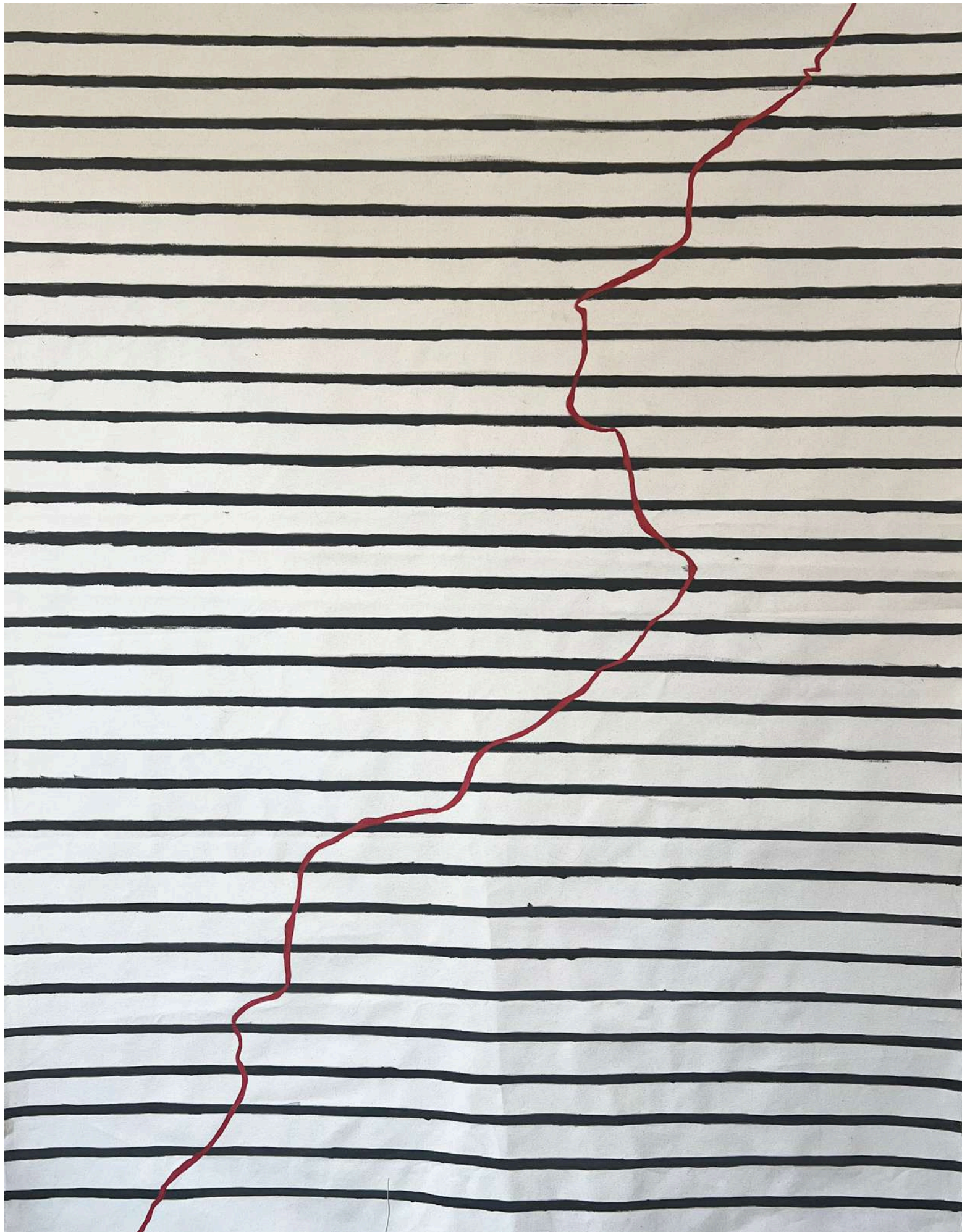
Detail shot

Porcelain 4
Approx 5 X 8 in



Detail shot

Delinations
Acrylic paint and thread on cotton
72 X 48 in



Detail shot

Delinations
Acrylic paint and thread on cotton
72 X 48 in

CONTACT US

Email : hello@cultivateart.in

Instagram : [@cultivateartglobal](https://www.instagram.com/cultivateartglobal)